



THE  
HIGHLIGHT  
BATTERSEA

Rise above the capital

YOURS FOR THE TAKING

# Ghelamco, creating the future

## YOUR RESIDENCE, OUR HIGHLIGHT

Soaring 24 storeys above the Thames, this exemplary, contemporary development of 1, 2 and 3 bedroom luxury residences is designed around your active, fashionable, urban lifestyle. Combining effortless luxury with opulent finishing touches, its inspired, intelligent architecture is creating a smarter, greener, more sustainable residence.



# A new benchmark in amenities

EVERYTHING INCLUDED, ALL AT THE AREA'S  
MOST COMPETITIVE SERVICE CHARGE

ROOFTOP WELLNESS PODS

PRIVATE DINING

CINEMA

MEETING ROOM & WORKSPACES

24-HOUR CONCIERGE

RIVERWALK

HILIGHT CLUB ROOM

# Rooftop

## A MULTI-DIMENSIONAL WELLNESS SPACE IN THE CLOUDS

London's first rooftop of its kind, The HiLight is a transformative wellness space designed for a new generation seeking balance and restoration by the riverside. Rooted in biophilic principles and mindful living, it pairs natural materials with smart functionality to support daily rituals.

Designed by Miminat Designs, this visionary rooftop offers immersive wellness experiences and panoramic views, giving residents a rare opportunity to recharge above the city and the Thames.





## Contrasting elements in perfect harmony

HEAT AND COLD, LIGHT AND DARK, MOVEMENT AND STILLNESS

Every detail is considered. Shower rituals are enhanced by Vitaclean's Vitamin C filters, which neutralise chlorine, soften hard water, and infuse skin and hair with nourishing botanicals, leaving you feeling refreshed, radiant, and revitalised.

For a deeper reset, residents can visit the Adaptogen Remedies Bar by DIRTEA, serving functional mushroom blends that support immunity, focus, calm, and energy. Featuring ingredients like lion's mane, chaga, and reishi, this modern apothecary is the ideal post-sauna ritual for rebalancing mind and body after a demanding day.



The HiLight's rooftop is more than an amenity, it's a multi-sensory wellness destination designed to enhance the well-being of all residents.

Here, colour and light are curated using the principles of chromotherapy, an ancient practice that uses colour frequencies to promote emotional balance, reduce stress, and support overall wellbeing. The space subtly shifts with time and mood, enhancing the senses and elevating the experience.

## A multi-sensory wellness destination

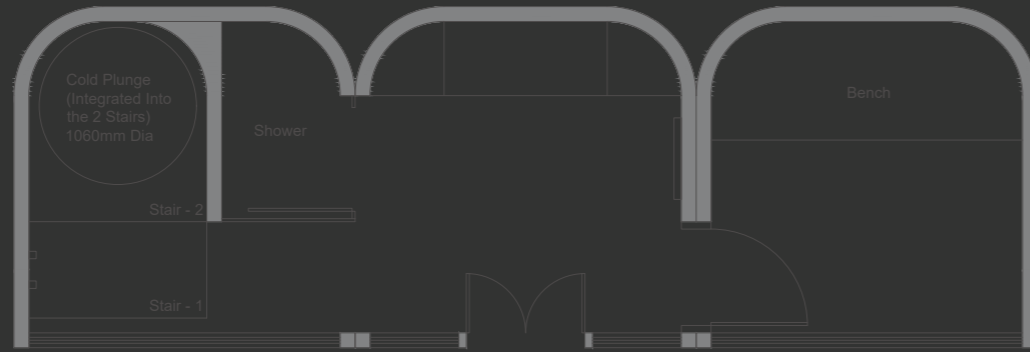
ELEVATING MIND AND BODY

This is wellness that engages all five senses, temperature, light, sound, scent, and touch, creating a seamless, immersive journey that rejuvenates body and mind. The result is a landmark destination, a tranquil rooftop sanctuary defined by energy, balance, and renewal

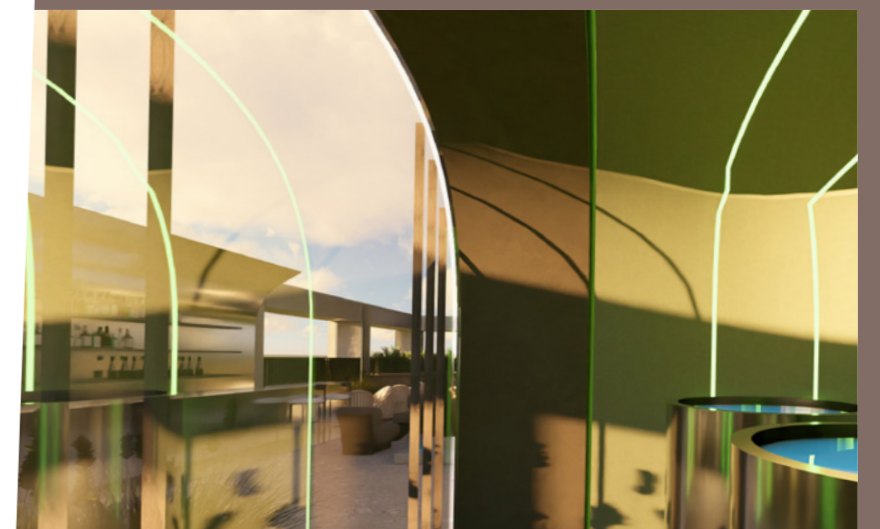
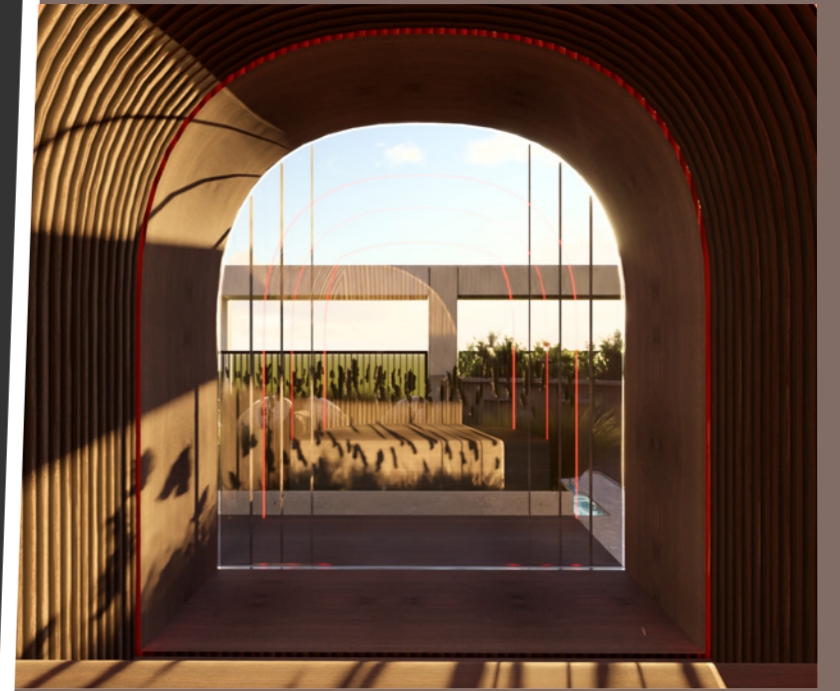
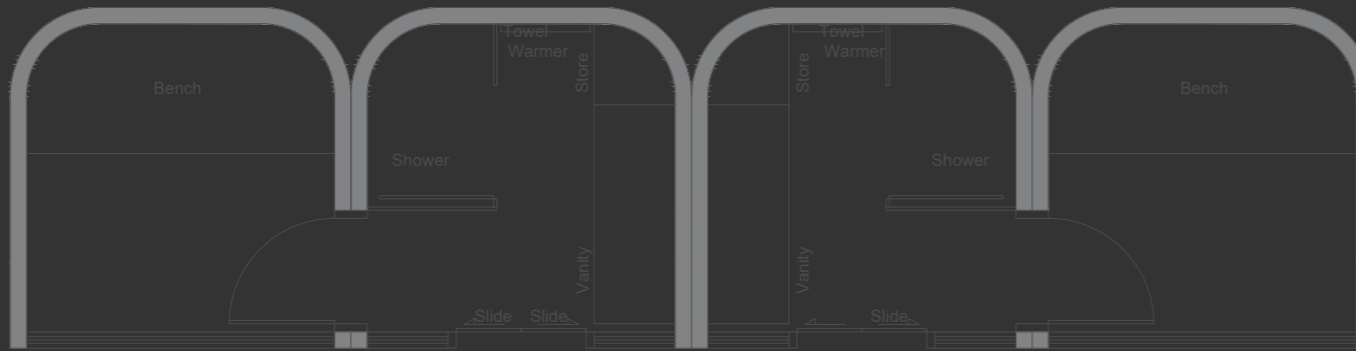
The result is a landmark destination, an exclusive, tranquil rooftop sanctuary defined by energy, balance, and renewal.



# EAST WING



# WEST WING



## WEST WING

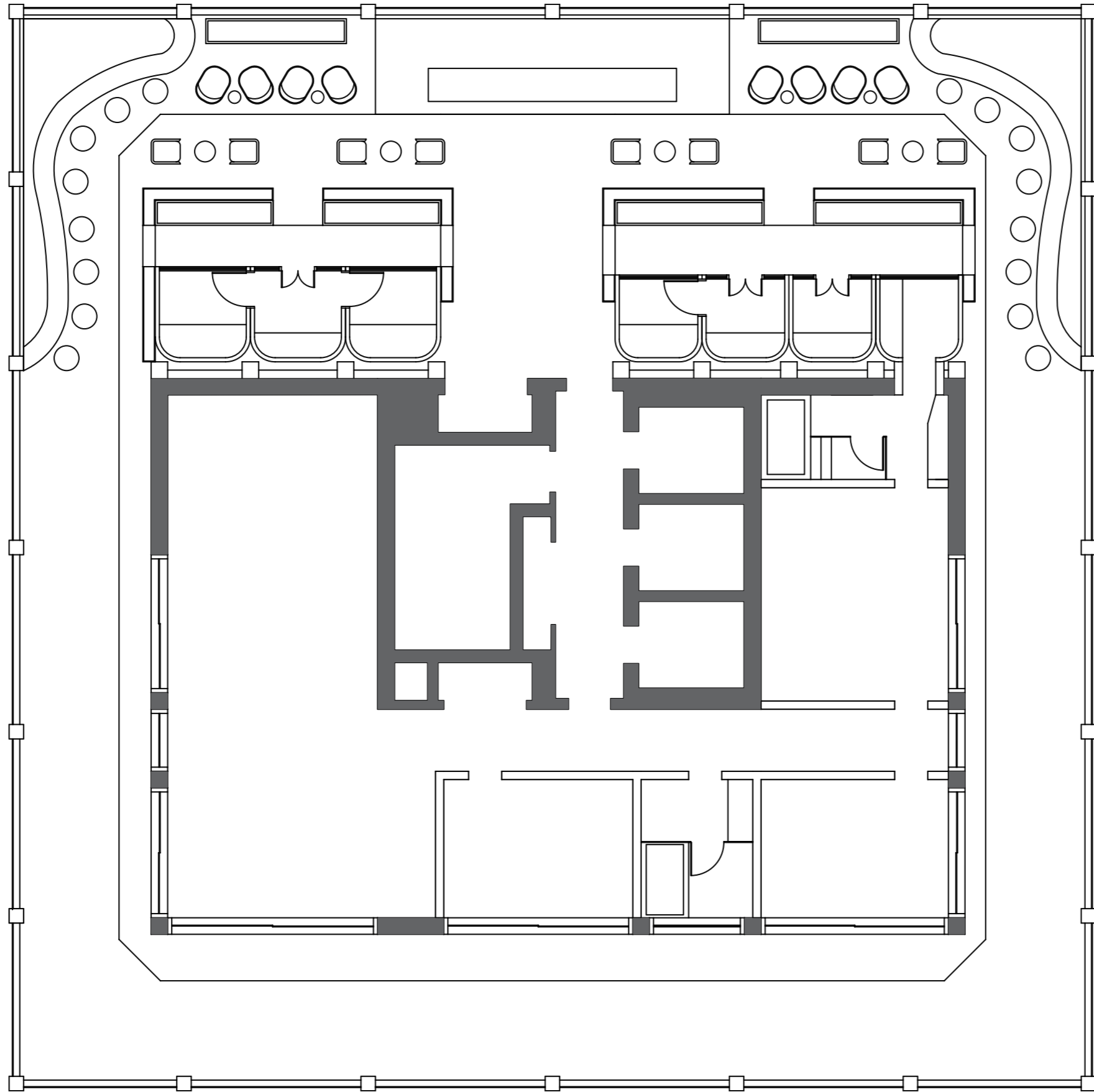
A PIONEERING EXPERIENCE IN LONDON'S RESIDENTIAL BUILDINGS

- Infrared Sauna With Salt Particles
- Cold Plunge
- Vitamin C-Infused Filtered Showers
- Shower & Dressing Zone

## EAST WING

THIS IS LONDON'S FIRST THERMAL SANCTUARY IN THE SKY, WHERE DESIGN, SCIENCE, AND WELLNESS CONVERGE

- Dry Sauna With Chromo-Therapy
- Wet Sauna
- Shower & Dressing Zone





## A new life, styled

### CREATING THE DREAMSCAPE

Thoughtfully designed to offer more of what modern life demands, The HiLight places convenience and comfort at the forefront. The double-height co-working lounge is far more than a glamorous lobby — it's a sophisticated, multifunctional space with elegant zones for deep focus, casual catch-ups, or impressive client meetings. Whether you're hosting a pitch, tackling your to-do list, or simply need a change of scene, this space adapts to your rhythm.

All seamlessly supported by your 24/7 concierge — always available to assist, arrange, or enhance your every day.





# Work out, within

YOGA, FITNESS, IN STYLE

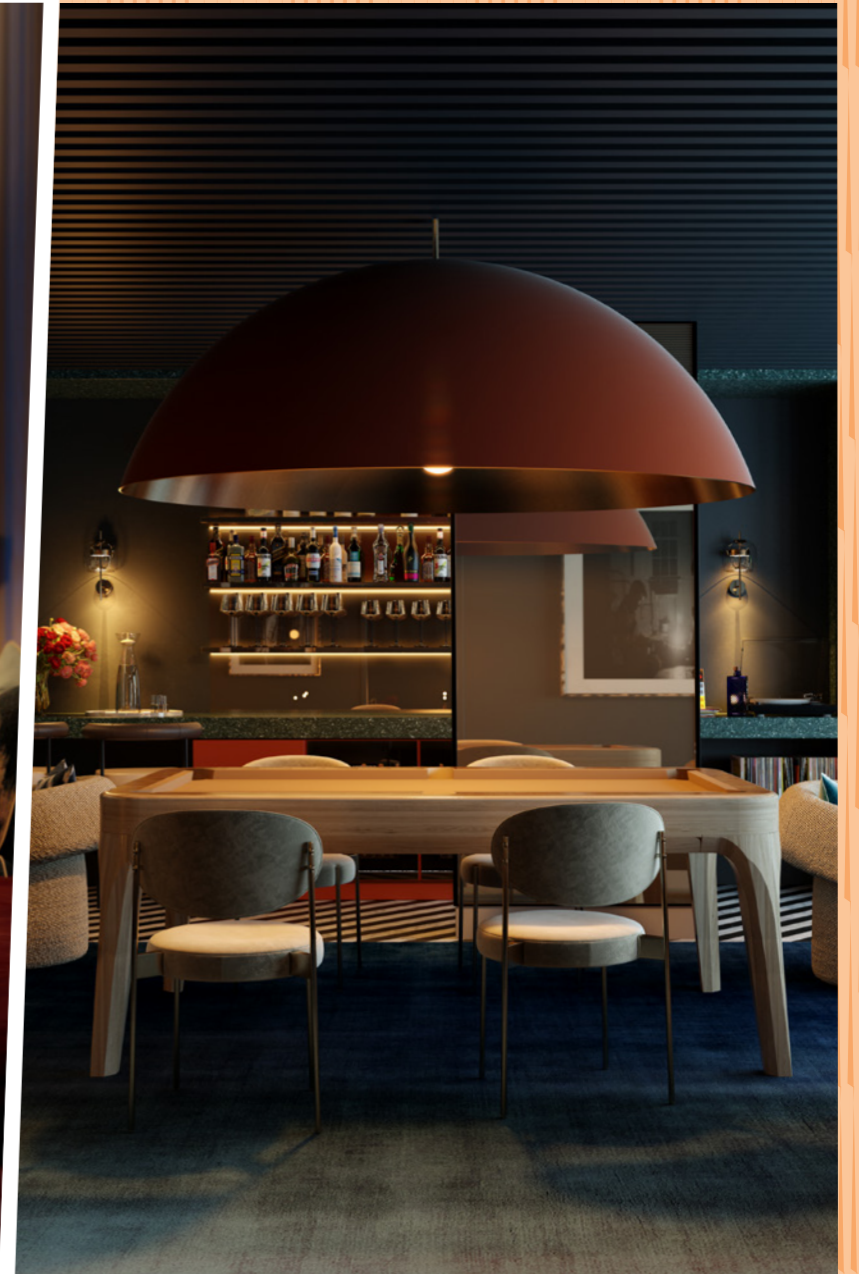
The studio is an exceptional multiuse venue, offering the space you need with an ambiance that inspires. Bespoke wallpaper, ample soft illumination, mirrored pillars, a cool vibe and perfect temperature plus, of course, automatic membership.



## Alluring Spaces

### PRIVATE SPACES FOR HIGHLIGHTERS

The Club room, lovingly created by Bowler James Brindley, offers sophisticated socialising with friends over a cocktail, pool table or both. Epitomising the exclusive nature of a club with the relaxed atmosphere of a bar, this is the perfect night out, in.





WATCH

Adjoined to the club room, your private screening room evokes the feel of a Hollywood Hills cinema. Complete with marshmallow-soft armchairs to sink into and side tables perfectly placed for popcorn or a martini from the honesty bar next door.



Riverwalk

## Placemaking

### A GREAT OUTDOORS

Award-winning landscape architects Grant Associates have reimagined the outdoors at The HiLight as more than just green space, it's a living, breathing extension of the community.

Bordering the revitalised Riverwalk and leading directly to the Thames Path, it's a place where culture and community naturally converge, a space to pause, play, and participate in a shared sense of place.

In addition, a curated selection of retail pods will offer an inviting mix of F&B options, right on your doorstep, whether you're grabbing a coffee on the go or unwinding with a glass of wine after work.

**“A LUSH, AIRY, TRANQUIL  
PARADISE DRAWING PEOPLE,  
PLANTS AND WILDLIFE TO A  
BIODIVERSE UTOPIA.”**

GRANT ASSOCIATES



## Eco standards

### THE HILIGHT IS CARBON NEUTRAL

The HiLight has been designed to be sustainable, in both construction and ongoing use. Using the FITWEL rating system the impact upon local communities has been addressed and safe social and nature interaction has been fostered. The EDGE certification reveals how The HiLight will, at a minimum, reduce its energy and water usage by 20% compared to a standard structure. Live well and more sustainably.

This commitment to sustainability extends to the way we manage costs for residents. The service charge at The HiLight has been intentionally set at a low £7.15 per square foot.



Energy efficient design  
maximising heat loss and gain



Water recycling  
for irrigation



Optimising and recycling,  
low impact and regionally  
sourced, materials



Sustainability Certificates



