



CLAREMONT
QUARTER

THE CLAREMONT (BLOCK 3)
CLAREMONT QUARTER, CRICKLEWOOD



THE CLAREMONT

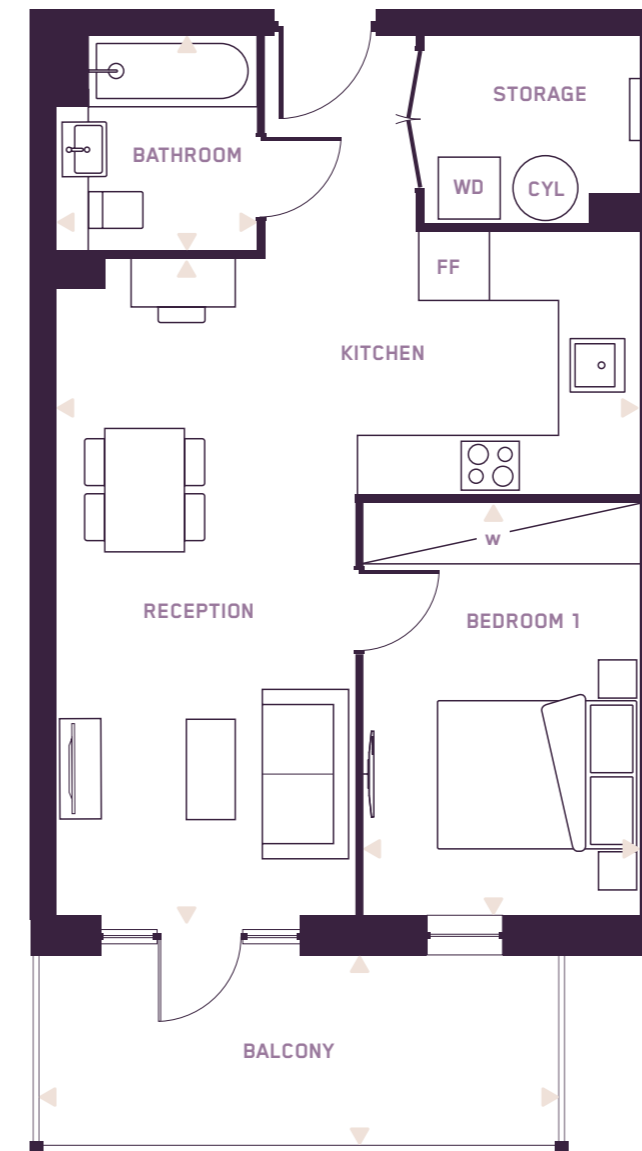
The Claremont is the third of three distinctive buildings within Claremont Quarter to come to market.

Positioned at the back of the scheme, this refined collection of private residences is the largest of the three.



THE CLAREMONT 1 BEDROOM APARTMENT

PLOTS 95 96 110 111 131 132



ROOM AREAS

1 Bedroom Apartment

— All Floors

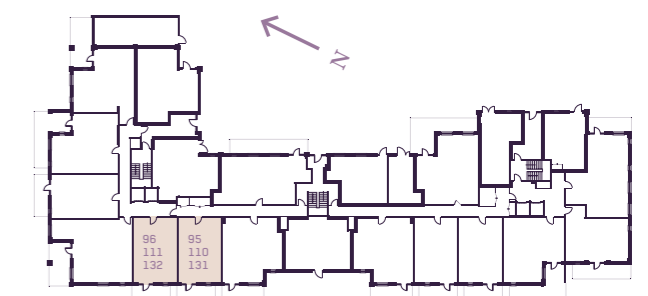
Kitchen / Reception	5.7 x 6.6m	• 18'8" x 21'7"
Bedroom 1	2.7 x 4.3m	• 9'0" x 14'0"
Bathroom	2.0 x 2.1m	• 6'7" x 7'1"
Balcony	3.5 x 1.6m	• 11'5" x 5'4"

Total area	51.4m ²	553ft ²
-------------------	--------------------	--------------------

	7
	6
	5
	4
	3
	2
PLOTS 131, 132	2
PLOTS 110, 111	1
PLOTS 95, 96	G

Key

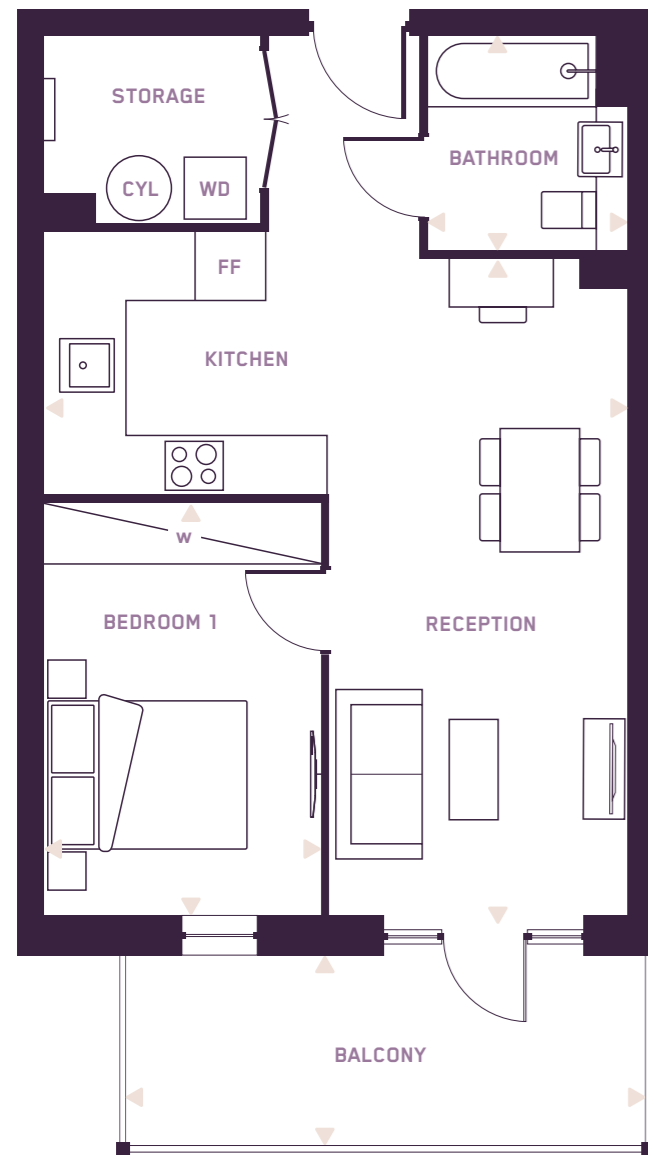
W	FITTED WARDROBE
CYL	CYLINDER
WD	WASHER DRYER
FF	FRIDGE FREEZER



DISTINCTIVE LIVING
A PLACE THAT CHANGES EVERYTHING

THE CLAREMONT 1 BEDROOM APARTMENT

PLOTS 106 107 126 127 147 148



ROOM AREAS

1 Bedroom Apartment

— All Floors

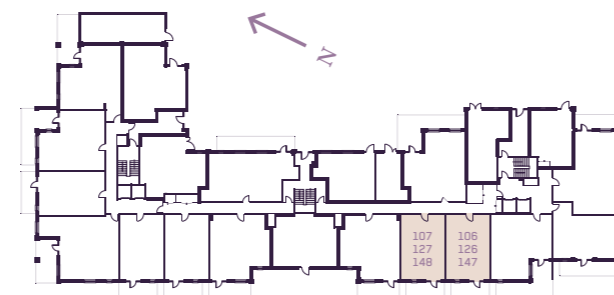
Kitchen / Reception	5.7 x 6.6m	• 18'8" x 21'7"
Bedroom 1	2.7 x 4.3m	• 9'0" x 14'0"
Bathroom	2.0 x 2.1m	• 6'7" x 7'1"
Balcony	3.5 x 1.6m	• 11'5" x 5'4"

Total area 51.4m² 553ft²

7
6
5
4
3
2
1
G

Key

W	FITTED WARDROBE
CYL	CYLINDER
WD	WASHER DRYER
FF	FRIDGE FREEZER



THE CLAREMONT 2 BEDROOM APARTMENT

PLOTS 94 109 130



ROOM AREAS

2 Bedroom Apartment

— All Floors

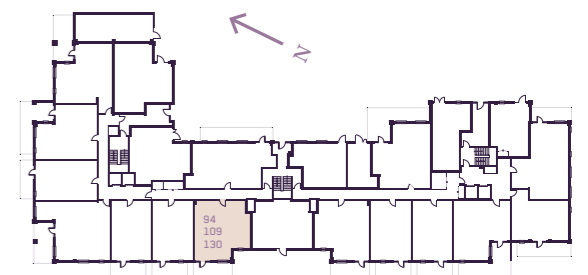
Kitchen / Reception	3.2 x 6.6m	• 10'5" x 21'7"
Bedroom 1	2.8 x 4.8m	• 9'0" x 15'8"
Ensuite	1.7 x 2.2m	• 5'7" x 7'1"
Bedroom 2	2.3 x 3.4m	• 7'6" x 11'3"
Bathroom	2.0 x 2.1m	• 6'7" x 7'1"
Balcony	5.7 x 1.6m	• 18'10" x 5'4"

Total area 65.3m² 703ft²

7
6
5
4
3
2
1
G

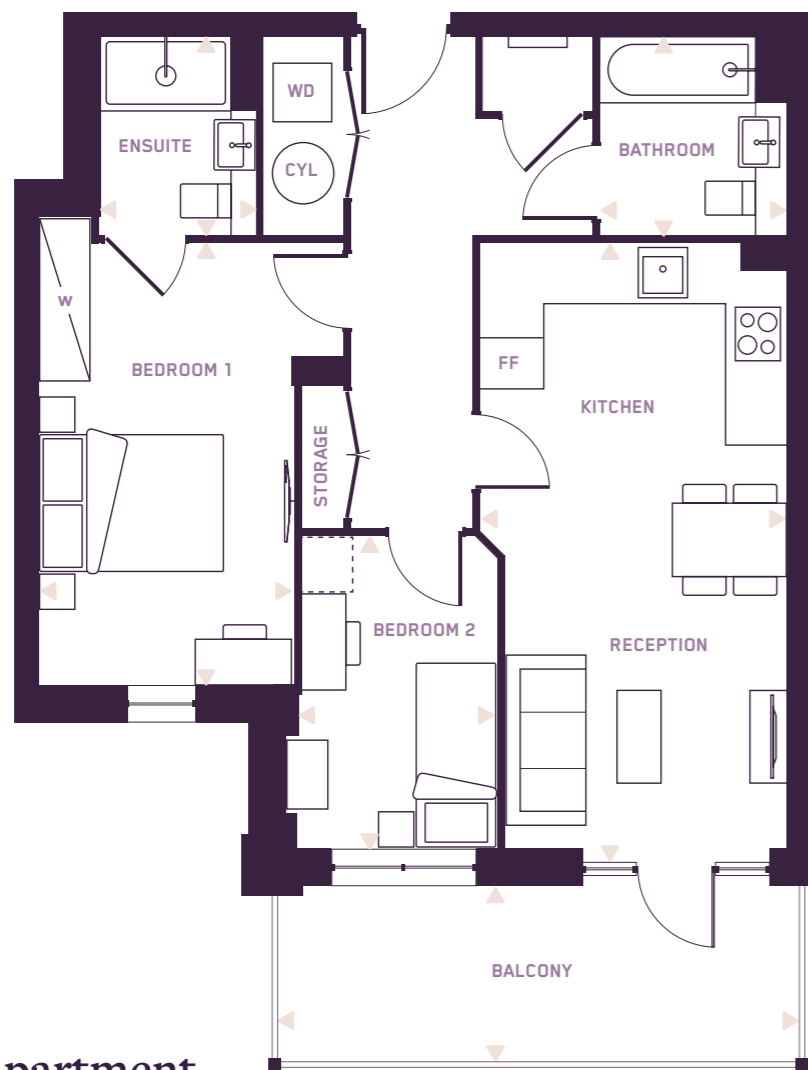
Key

W	FITTED WARDROBE
- - -	SPACE FOR WARDROBE
CYL	CYLINDER
WD	WASHER DRYER
FF	FRIDGE FREEZER



THE CLAREMONT 2 BEDROOM APARTMENT

PLOTS 108 128 149



ROOM AREAS
2 Bedroom Apartment
— All Floors

Key

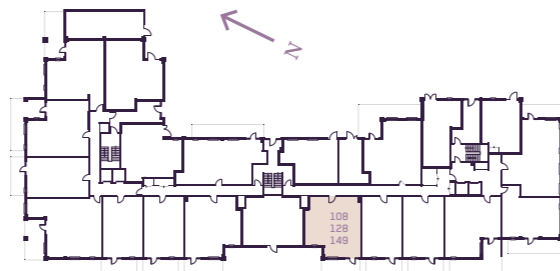
- W — FITTED WARDROBE
- - - SPACE FOR WARDROBE
- CYL — CYLINDER
- WD — WASHER DRYER
- FF — FRIDGE FREEZER

Kitchen / Reception	3.2 x 6.6m	• 10'5" x 21'7"
Bedroom 1	2.8 x 4.8m	• 9'0" x 15'8"
Ensuite	1.7 x 2.2m	• 5'7" x 7'1"
Bedroom 2	2.3 x 3.4m	• 7'6" x 11'3"
Bathroom	2.0 x 2.1m	• 6'7" x 7'1"
Balcony	5.7 x 1.6m	• 18'10" x 5'4"

Total area 65.3m² 703ft²

7
6
5
4
3
2
1
0

PLOTS 149 2
PLOTS 128 1
PLOTS 108 6



DISTINCTIVE LIVING
A PLACE THAT CHANGES EVERYTHING

THE CLAREMONT 2 BEDROOM APARTMENT

PLOTS 105 125 146



ROOM AREAS
2 Bedroom Apartment
— Ground Floor

Key

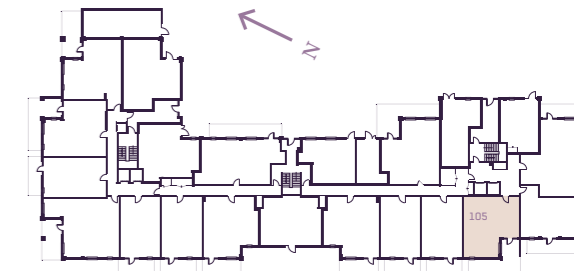
- W — FITTED WARDROBE
- - - SPACE FOR WARDROBE
- CYL — CYLINDER
- WD — WASHER DRYER
- FF — FRIDGE FREEZER

Kitchen / Reception	5.8 x 5.0m	• 18'11" x 16'5"
Bedroom 1	2.8 x 4.9m	• 9'0" x 16'1"
Ensuite	1.7 x 2.2m	• 5'7" x 7'1"
Bedroom 2	2.4 x 3.5m	• 7'9" x 11'4"
Bathroom	2.0 x 2.1m	• 6'7" x 7'1"
Balcony	3.0 x 3.0m	• 9'10" x 9'10"

Total area 63.4m² 682ft²

7
6
5
4
3
2
1
0

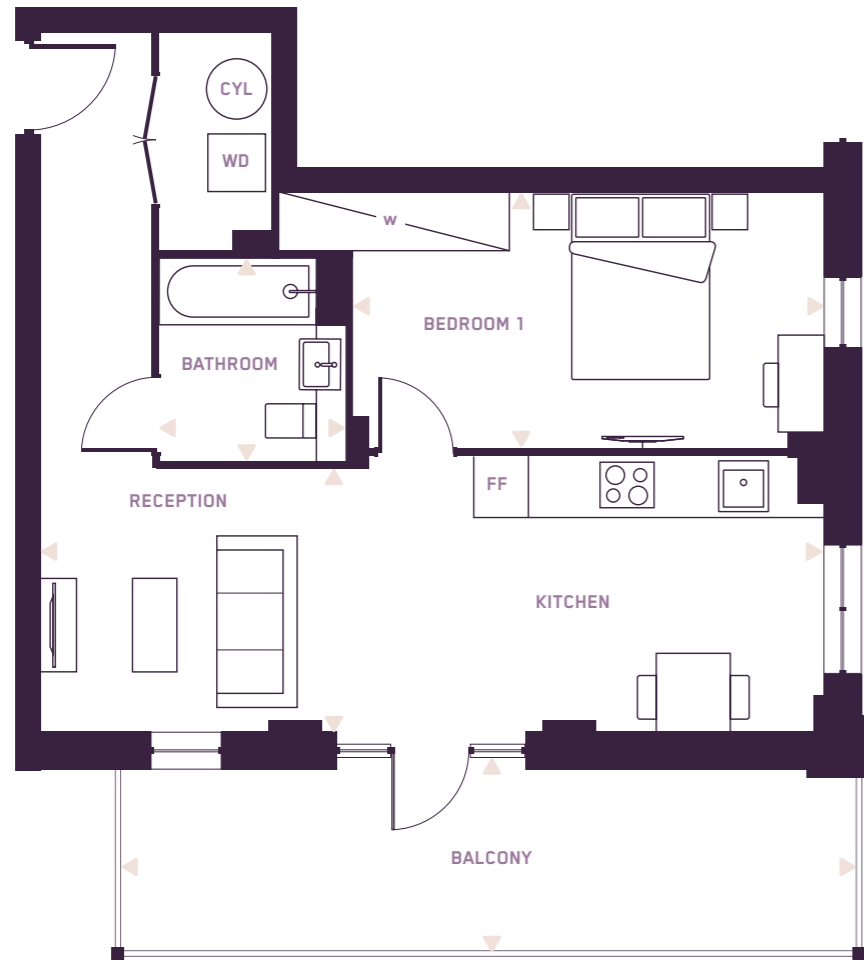
PLOTS 146 2
PLOTS 125 1
PLOTS 105 6



DISTINCTIVE LIVING
A PLACE THAT CHANGES EVERYTHING

THE CLAREMONT 1 BEDROOM APARTMENT

PLOTS 104 124 145



ROOM AREAS

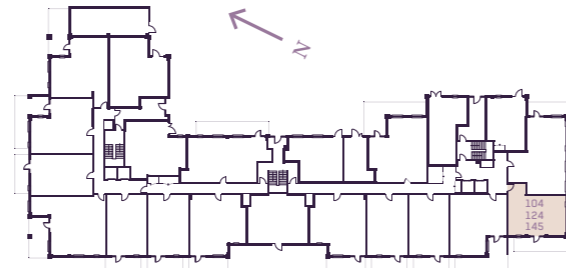
1 Bedroom Apartment

— All Floors

Kitchen / Reception	8.4 x 3.0m	• 27'6" x 9'9"
Bedroom 1	5.0 x 2.8m	• 16'8" x 9'0"
Bathroom	2.0 x 2.2m	• 6'7" x 7'1"
Balcony	3.5 x 1.6m	• 11'5" x 5'4"

Total area 53.2m² 573ft²

7
6
5
4
3
2
1
0
PLOTS 145
PLOTS 124
PLOTS 104

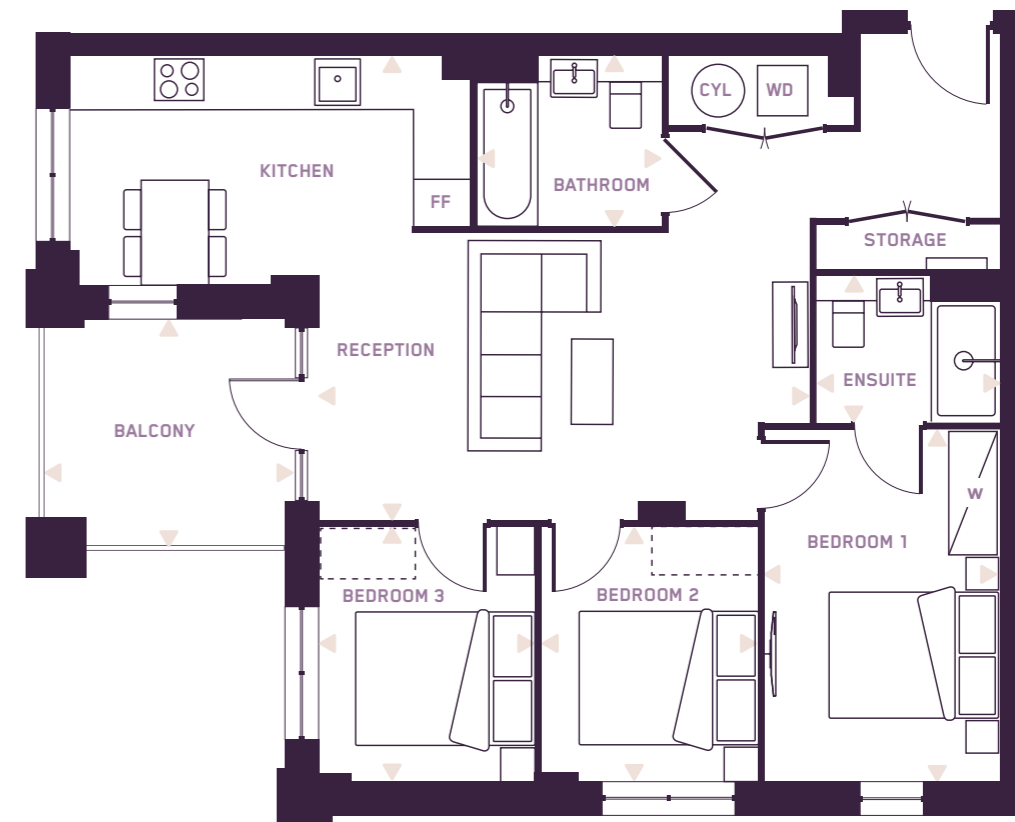


Key

W	FITTED WARDROBE
CYL	CYLINDER
WD	WASHER DRYER
FF	FRIDGE FREEZER

THE CLAREMONT 3 BEDROOM APARTMENT

PLOTS 97 112 133



ROOM AREAS

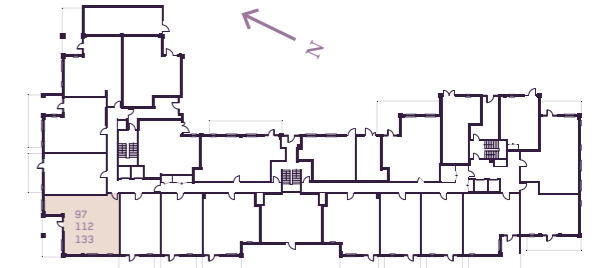
3 Bedroom Apartment

— All Floors

Kitchen / Reception	5.7 x 5.4m	• 18'7" x 17'8"
Bedroom 1	2.8 x 4.2m	• 9'0" x 13'8"
Ensuite	1.7 x 2.2m	• 5'7" x 7'1"
Bedroom 2	2.6 x 3.0m	• 8'4" x 9'11"
Bedroom 3	2.6 x 3.0m	• 8'4" x 9'11"
Bathroom	2.0 x 2.2m	• 6'7" x 7'1"
Balcony	2.6 x 2.6m	• 8'7" x 8'7"

Total area 76.9m² 828ft²

7
6
5
4
3
2
1
0
PLOTS 133
PLOTS 112
PLOTS 97



Key

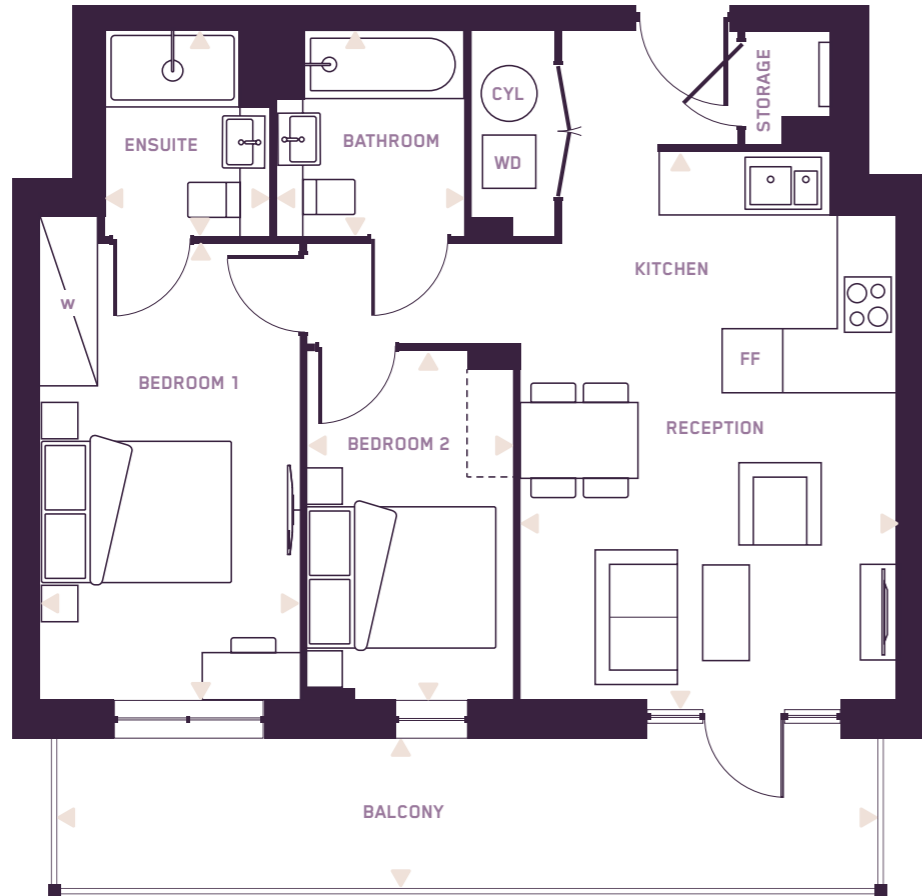
W	FITTED WARDROBE
- - -	SPACE FOR WARDROBE
CYL	CYLINDER
WD	WASHER DRYER
FF	FRIDGE FREEZER

DISTINCTIVE LIVING
A PLACE THAT CHANGES EVERYTHING

DISTINCTIVE LIVING
A PLACE THAT CHANGES EVERYTHING

THE CLAREMONT 2 BEDROOM APARTMENT

PLOTS 129 150

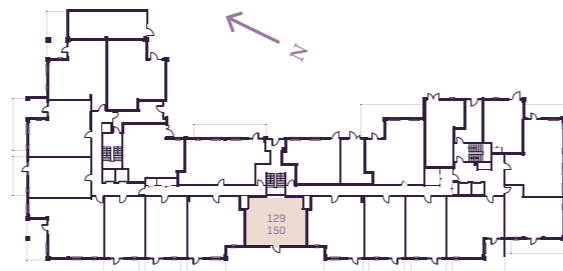


ROOM AREAS 2 Bedroom Apartment

— 1-7

Kitchen / Reception	3.9 x 5.7m	• 12'9" x 18'10"
Bedroom 1	2.8 x 4.7m	• 9'0" x 15'4"
Ensuite	1.7 x 2.2m	• 5'7" x 7'1"
Bedroom 2	2.2 x 3.5m	• 7'1" x 11'8"
Bathroom	2.0 x 2.1m	• 6'7" x 7'1"
Balcony	8.6 x 1.6m	• 28'5" x 5'4"
Total area	60.5m²	651ft²

7
6
5
4
3
2
1
6



Key

- W — FITTED WARDROBE
- - - SPACE FOR WARDROBE
- CYL — CYLINDER
- WD — WASHER DRYER
- FF — FRIDGE FREEZER

THE CLAREMONT 1 BEDROOM APARTMENT

PLOTS 98 113 134

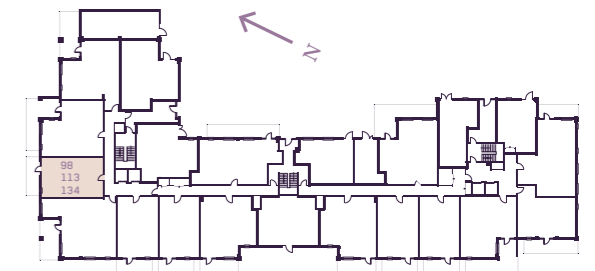


ROOM AREAS 1 Bedroom Apartment

— All Floors

Kitchen / Reception	5.7 x 6.8m	• 18'8" x 22'4"
Bedroom 1	2.8 x 4.5m	• 9'0" x 14'9"
Bathroom	2.1 x 2.0m	• 7'1" x 6'7"
Balcony	1.6 x 3.5m	• 5'4" x 11'5"
Total area	78.7m²	566ft²

7
6
5
4
3
2
1
6

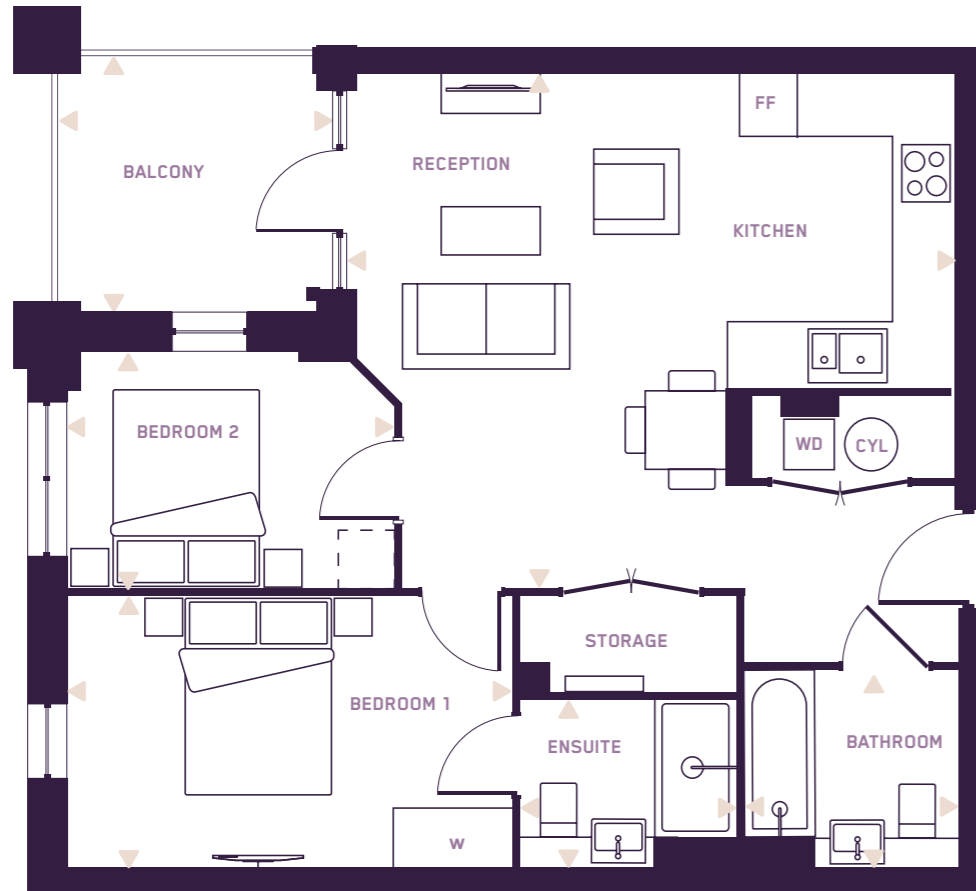


Key

- W — FITTED WARDROBE
- - - SPACE FOR WARDROBE
- CYL — CYLINDER
- WD — WASHER DRYER
- FF — FRIDGE FREEZER

THE CLAREMONT 2 BEDROOM APARTMENT

PLOTS 99 114 135



ROOM AREAS

2 Bedroom Apartment

— All Floors

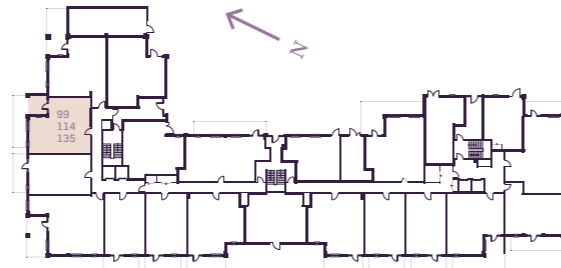
Key

W	FITTED WARDROBE
- - -	SPACE FOR WARDROBE
CYL	CYLINDER
WD	WASHER DRYER
FF	FRIDGE FREEZER

Kitchen / Reception	6.4 x 5.4m	• 21'0" x 17'8"
Bedroom 1	2.8 x 4.5m	• 9'0" x 14'10"
Bedroom 2	2.4 x 3.3m	• 7'11" x 10'11"
Bathroom	2.1 x 2.0m	• 7'1" x 6'7"
Ensuite	2.1 x 1.7m	• 7'1" x 5'7"
Balcony	2.6 x 2.6m	• 8'7" x 8'7"

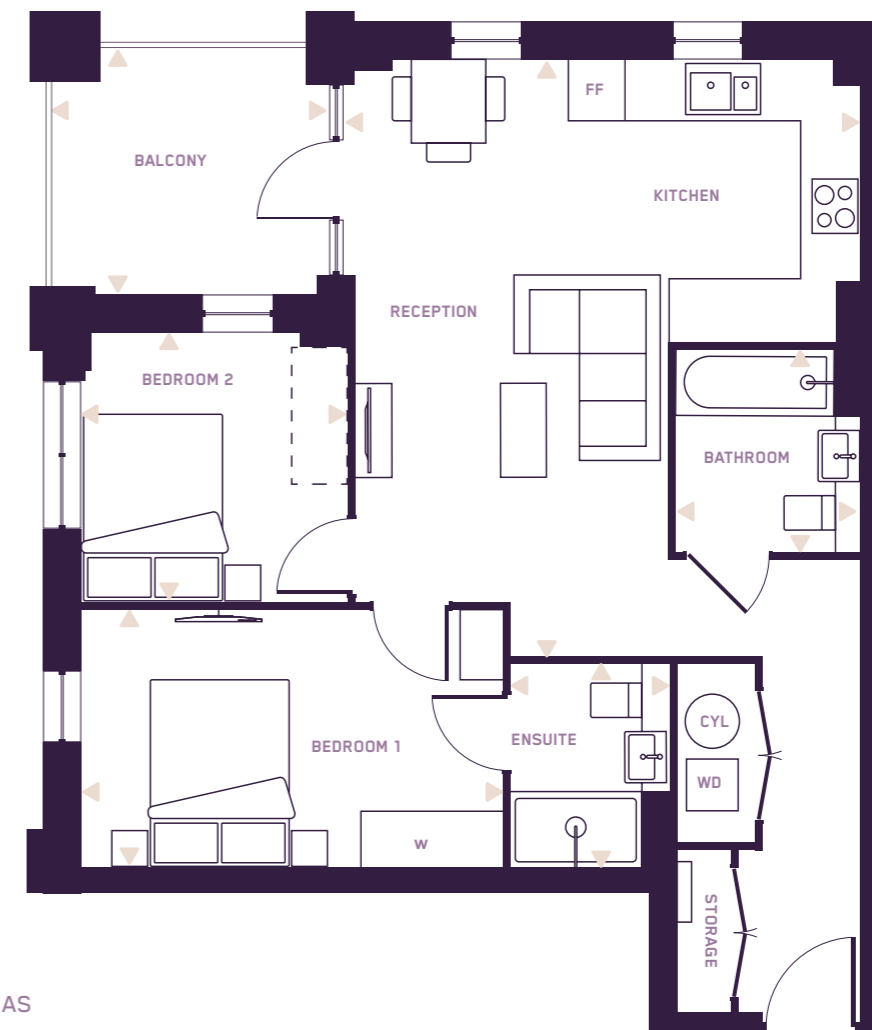
Total area 64.5m² 694ft²

7
6
5
4
3
2
1
0



THE CLAREMONT 2 BEDROOM APARTMENT

PLOTS 100 115 136



ROOM AREAS

2 Bedroom Apartment

— All Floors

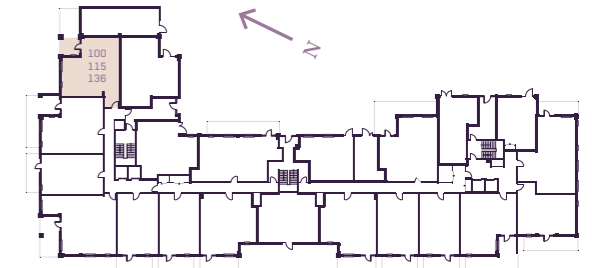
Key

W	FITTED WARDROBE
- - -	SPACE FOR WARDROBE
CYL	CYLINDER
WD	WASHER DRYER
FF	FRIDGE FREEZER

Kitchen / Reception	5.4 x 6.4m	• 17'8" x 21'0"
Bedroom 1	2.7 x 4.5m	• 9'0" x 14'8"
Bedroom 2	2.9 x 2.8m	• 9'5" x 9'4"
Bathroom	2.1 x 2.0m	• 7'1" x 6'7"
Ensuite	2.1 x 1.7m	• 7'1" x 5'7"
Balcony	2.6 x 2.6m	• 8'7" x 8'7"

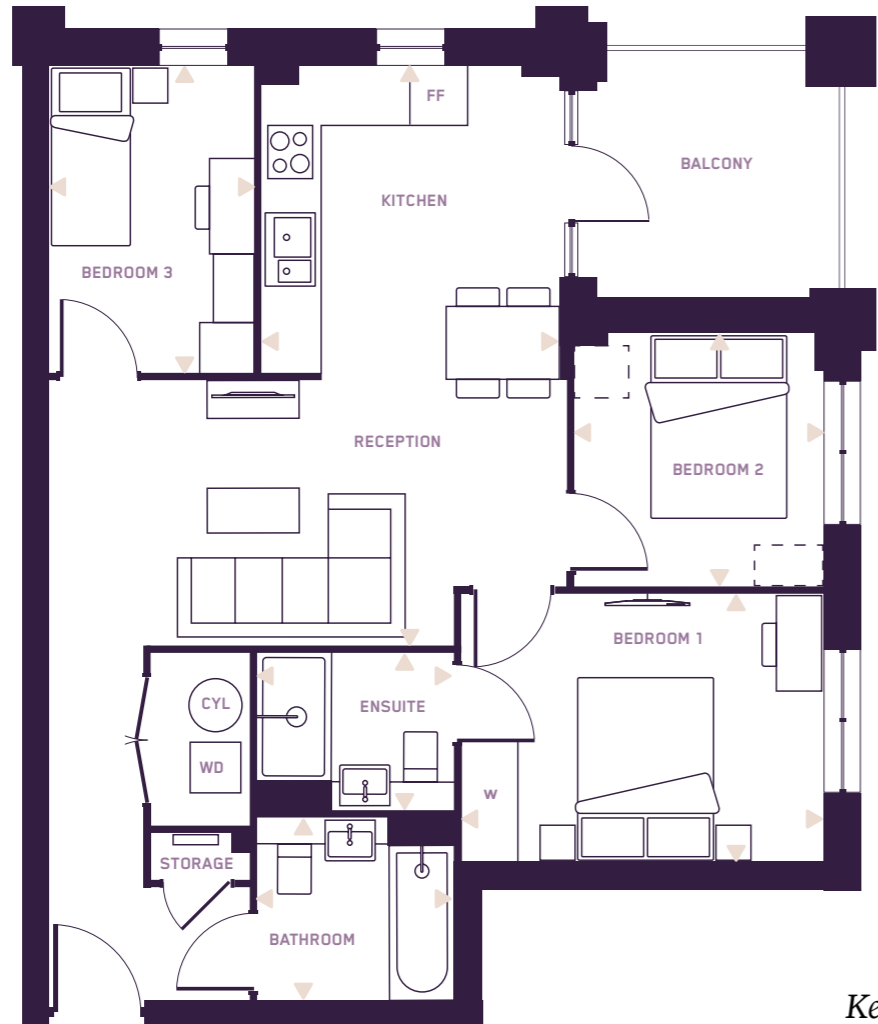
Total area 66.8m² 718ft²

7
6
5
4
3
2
1
0



THE CLAREMONT 3 BEDROOM APARTMENT

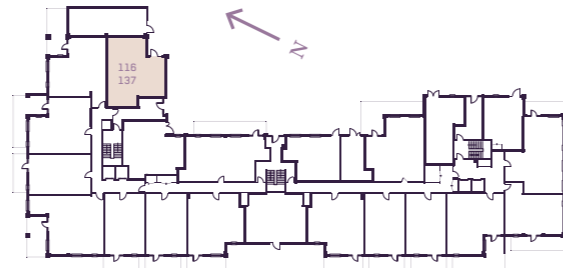
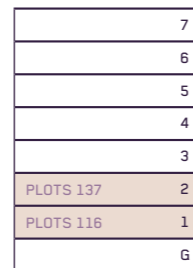
PLOTS 116 137



ROOM AREAS 3 Bedroom Apartment — 1 - 7



Kitchen / Reception	6.3 x 5.7m	• 20'9" x 18'7"
Bedroom 1	2.9 x 4.0m	• 9'8" x 13'4"
Bedroom 2	2.7 x 2.7m	• 8'11" x 9'0"
Bedroom 3	2.2 x 3.4m	• 7'5" x 11'0"
Bathroom	2.1 x 2.0m	• 7'1" x 6'7"
Ensuite	2.1 x 1.7m	• 7'1" x 5'7"
Balcony	2.6 x 2.6m	• 8'7" x 8'7"
Total area	71.9m²	774ft²

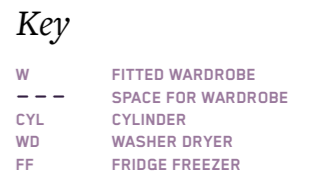


THE CLAREMONT 2 BEDROOM APARTMENT

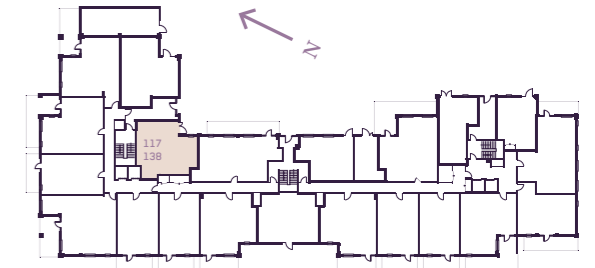
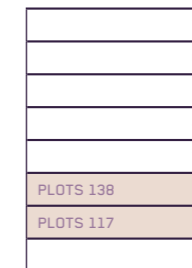
PLOTS 117 138



ROOM AREAS 2 Bedroom Apartment — 1 - 7



Kitchen / Reception	4.9 x 5.2m	• 16'3" x 17'2"
Bedroom 1	6.6 x 3.0m	• 21'10" x 9'10"
Bedroom 2	4.7 x 2.5m	• 15'6" x 8'2"
Bathroom	2.5 x 2.3m	• 8'2" x 7'1"
Balcony	2.6 x 2.6m	• 8'7" x 8'7"
Total area	78.7m²	847ft²



THE CLAREMONT 3 BEDROOM APARTMENT

PLOTS 101 118 139

THE CLAREMONT 3 BEDROOM APARTMENT

PLOTS 119 140

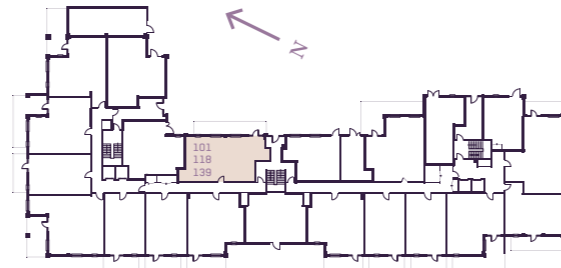


ROOM AREAS 3 Bedroom Apartment

— All Floors

Kitchen / Reception	6.5 x 5.3m	• 21'3" x 17'5"
Bedroom 1	2.8 x 4.5m	• 9'0" x 14'7"
Bedroom 2	2.6 x 3.3m	• 8'7" x 10'11"
Bedroom 3	2.7 x 3.3m	• 8'10" x 10'11"
Bathroom	2.1 x 1.7m	• 7'1" x 6'7"
Ensuite	2.1 x 2.0m	• 7'1" x 5'7"
Balcony	5.7 x 1.6m	• 18'10" x 5'4"
Total area	73.4m²	790.4ft²

	7
	6
	5
	4
	3
PLOTS 139	2
PLOTS 118	1
PLOTS 101	6



Key

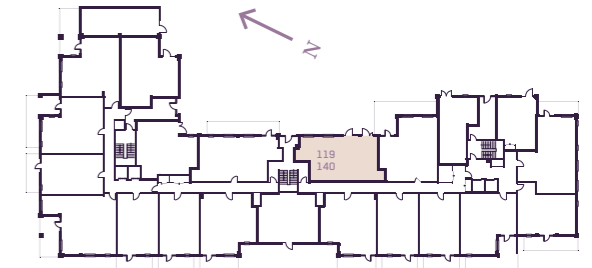
- W — FITTED WARDROBE
- - - SPACE FOR WARDROBE
- CYL — CYLINDER
- WD — WASHER DRYER
- FF — FRIDGE FREEZER

ROOM AREAS 3 Bedroom Apartment

— 1 - 7

Kitchen / Reception	6.5 x 5.3m	• 21'3" x 17'5"
Bedroom 1	2.8 x 4.5m	• 9'0" x 14'7"
Bedroom 2	2.6 x 3.3m	• 8'7" x 10'11"
Bedroom 3	2.7 x 3.3m	• 8'10" x 10'11"
Bathroom	2.1 x 1.7m	• 7'1" x 6'7"
Ensuite	2.1 x 2.0m	• 7'1" x 5'7"
Balcony	5.7 x 1.6m	• 18'10" x 5'4"
Total area	73.4m²	790.4ft²

	7
	6
	5
	4
	3
PLOTS 140	2
PLOTS 119	1
	6

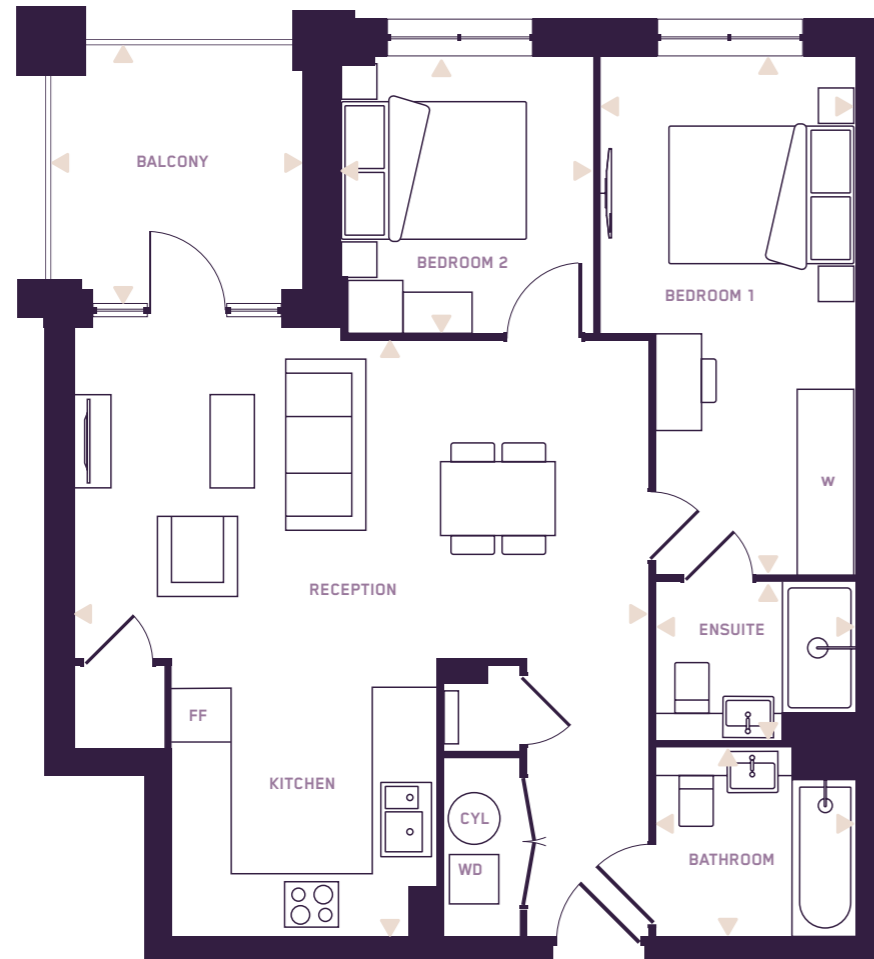


Key

- W — FITTED WARDROBE
- - - SPACE FOR WARDROBE
- CYL — CYLINDER
- WD — WASHER DRYER
- FF — FRIDGE FREEZER

THE CLAREMONT 2 BEDROOM APARTMENT

PLOTS 102 120 141



ROOM AREAS

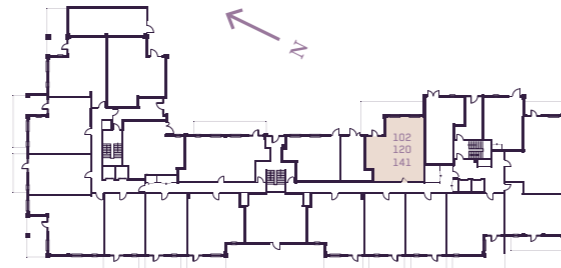
2 Bedroom Apartment

— 1 - 7

Kitchen / Reception	6.1 x 6.5m	•	20'1" x 21'3"
Bedroom 1	2.7 x 4.4m	•	9'0" x 17'10"
Bedroom 2	2.7 x 3.0m	•	9'0" x 9'10"
Bathroom	2.1 x 2.0m	•	7'1" x 6'7"
Ensuite	2.1 x 1.7m	•	7'1" x 5'7"
Balcony	2.6 x 2.6m	•	8'7" x 8'7"

Total area 69.2m² 745ft²

7
6
5
4
3
2
1
G



Key

W	FITTED WARDROBE
- - -	SPACE FOR WARDROBE
CYL	CYLINDER
WD	WASHER DRYER
FF	FRIDGE FREEZER

THE CLAREMONT 1 BEDROOM APARTMENT

PLOTS 121 142



ROOM AREAS

1 Bedroom Apartment

— 1 - 7

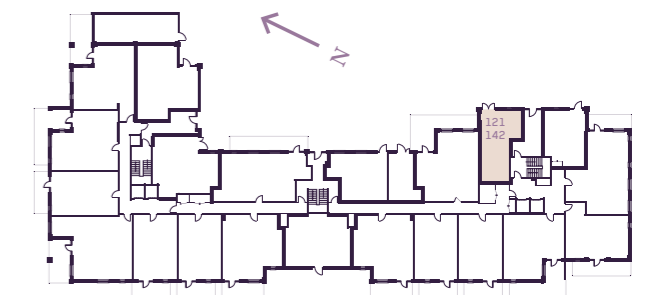
Kitchen / Reception	3.7 x 5.8m	•	12'3" x 19'2"
Bedroom 1	2.7 x 6.0m	•	9'0" x 19'1"
Bathroom	2.1 x 2.0m	•	7'1" x 6'7"
Balcony	3.4 x 1.6m	•	11'3" x 5'4"

Total area 51.6m² 556ft²

7
6
5
4
3
2
1
G

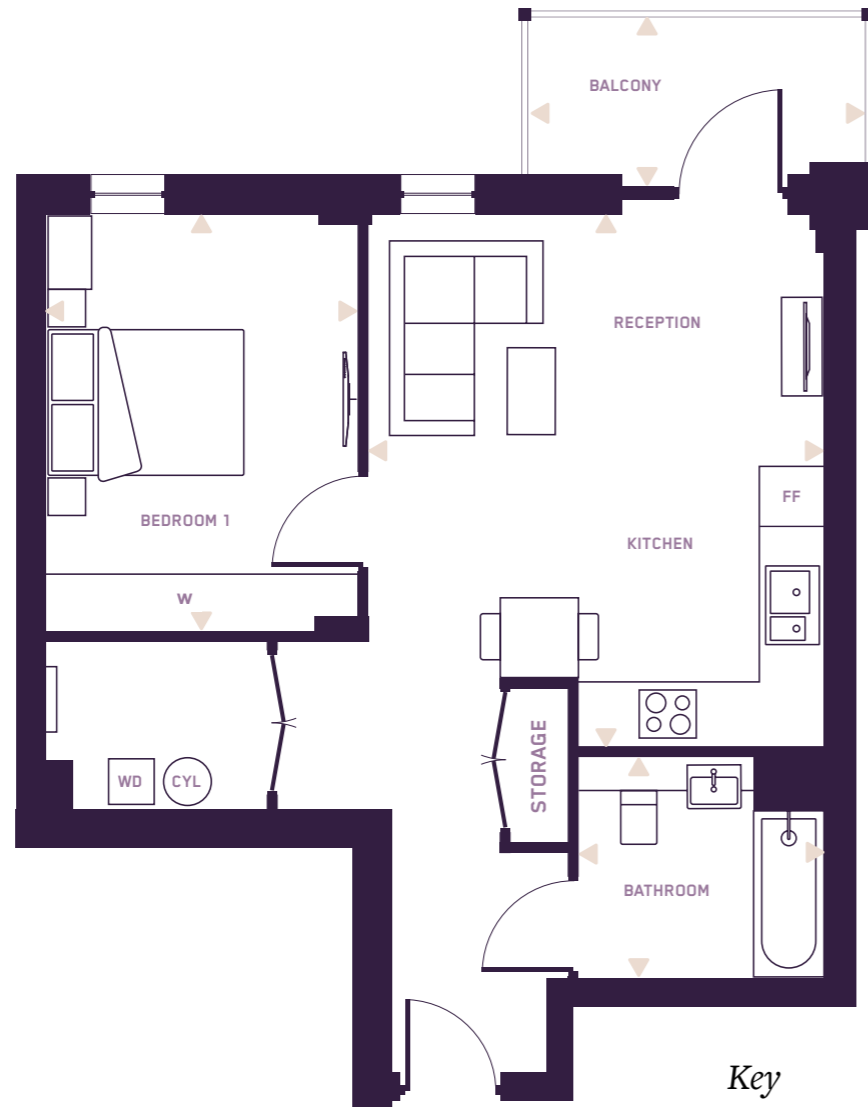
Key

W	FITTED WARDROBE
CYL	CYLINDER
WD	WASHER DRYER
FF	FRIDGE FREEZER



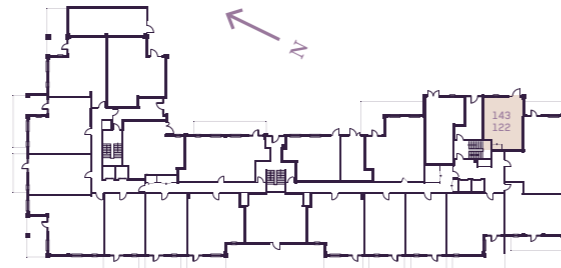
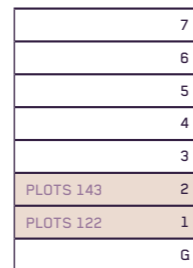
THE CLAREMONT
1 BEDROOM APARTMENT

PLOTS 122 143



ROOM AREAS
1 Bedroom Apartment
— 1 - 7

Kitchen / Reception	4.5 x 5.4m	• 15'1" x 17'10"
Bedroom 1	3.2 x 4.3m	• 8'2" x 15'0"
Bathroom	2.5 x 2.3m	• 8'2" x 7'7"
Balcony	3.4 x 1.6m	• 5'4" x 11'3"
Total area	57.3m²	617ft²



THE CLAREMONT
3 BEDROOM APARTMENT

PLOTS 103 123 144

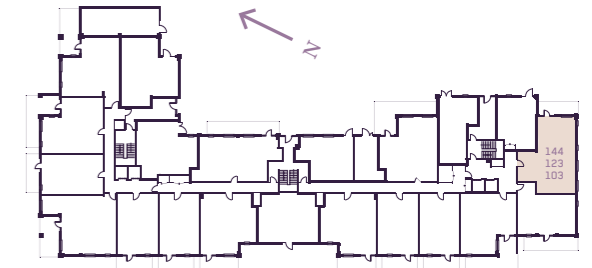
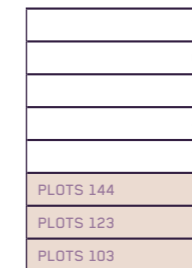


ROOM AREAS
3 Bedroom Apartment
— All Floors

Key

- W — FITTED WARDROBE
- SPACE FOR WARDROBE
- CYL — CYLINDER
- WD — WASHER DRYER
- FF — FRIDGE FREEZER

Kitchen / Reception	5.4 x 3.9m	• 17'11" x 12'0"
Bedroom 1	2.7 x 6.1m	• 9'0" x 20'0"
Bedroom 2	4.2 x 2.1m	• 13'9" x 7'10"
Bedroom 3	4.4 x 2.1m	• 14'7" x 7'10"
Bathroom	2.1 x 2.0m	• 7'1" x 6'7"
Ensuite	2.1 x 1.7m	• 7'1" x 5'7"
Balcony	1.5 x 5.2m	• 5'0" x 17'2"
Total area	74.8m²	804ft²



FLEXIBLE SPACES FOR MODERN LONDON LIVING



SITE PLAN



- 1 Beaumont House
- 2 Rosemont Mansion
- 3 The Claremont
- 4 Pocket Park
- 5 Sensory Gardens
- 6 Millennium Green