



CLAREMONT  
QUARTER

**BEAUMONT HOUSE (BLOCK 1)**  
CLAREMONT QUARTER, CRICKLEWOOD



# BEAUMONT HOUSE

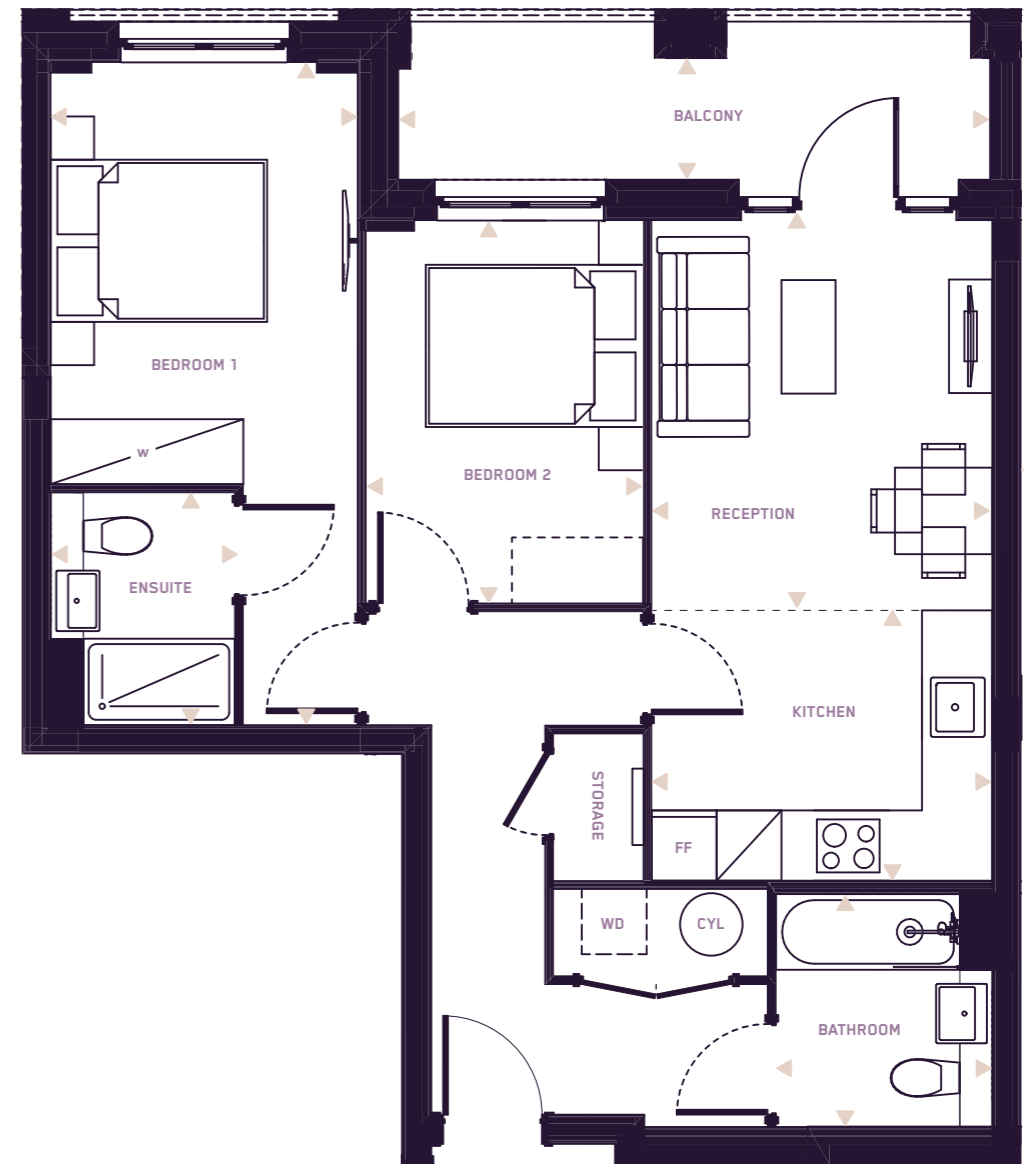
Beaumont House is the first of three distinctive buildings within Claremont Quarter to come to market.

Positioned at the gateway to the scheme, this refined collection of private residences is quietly nestled within landscaped gardens, set back from the road to offer both privacy and serenity.

Rising six storeys, Beaumont House comprises 55 elegant apartments in a thoughtfully curated mix of one- and two-bedroom layouts. Each residence has been designed to maximise light, space and comfort, with 6 unique floorplan formats to suit a range of lifestyles.



## BEAUMONT HOUSE 2 BEDROOM APARTMENT PLOTS 15 25 35 45 55



ROOM AREAS

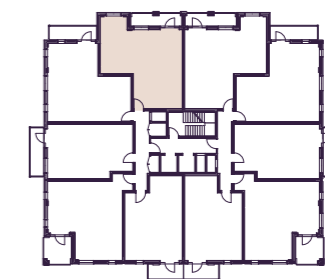
### 2 Bedroom Apartment

— 1st - 5th

Reception	3.1 x 3.6m • 10'1" x 11'9"
Kitchen	3.1 x 2.5m • 10'4" x 8'2"
Bedroom 1	2.8 x 6.1m • 9'4" x 20'1"
Ensuite	1.7 x 2.2m • 5'7" x 7'1"
Bedroom 2	2.5 x 3.5m • 8'5" x 11'7"
Bathroom	2.0 x 2.1m • 6'7" x 7'1"
Balcony	5.5 x 1.1m • 18'8" x 3'9"
<b>Total area</b>	<b>64m<sup>2</sup>      689ft<sup>2</sup></b>

Key

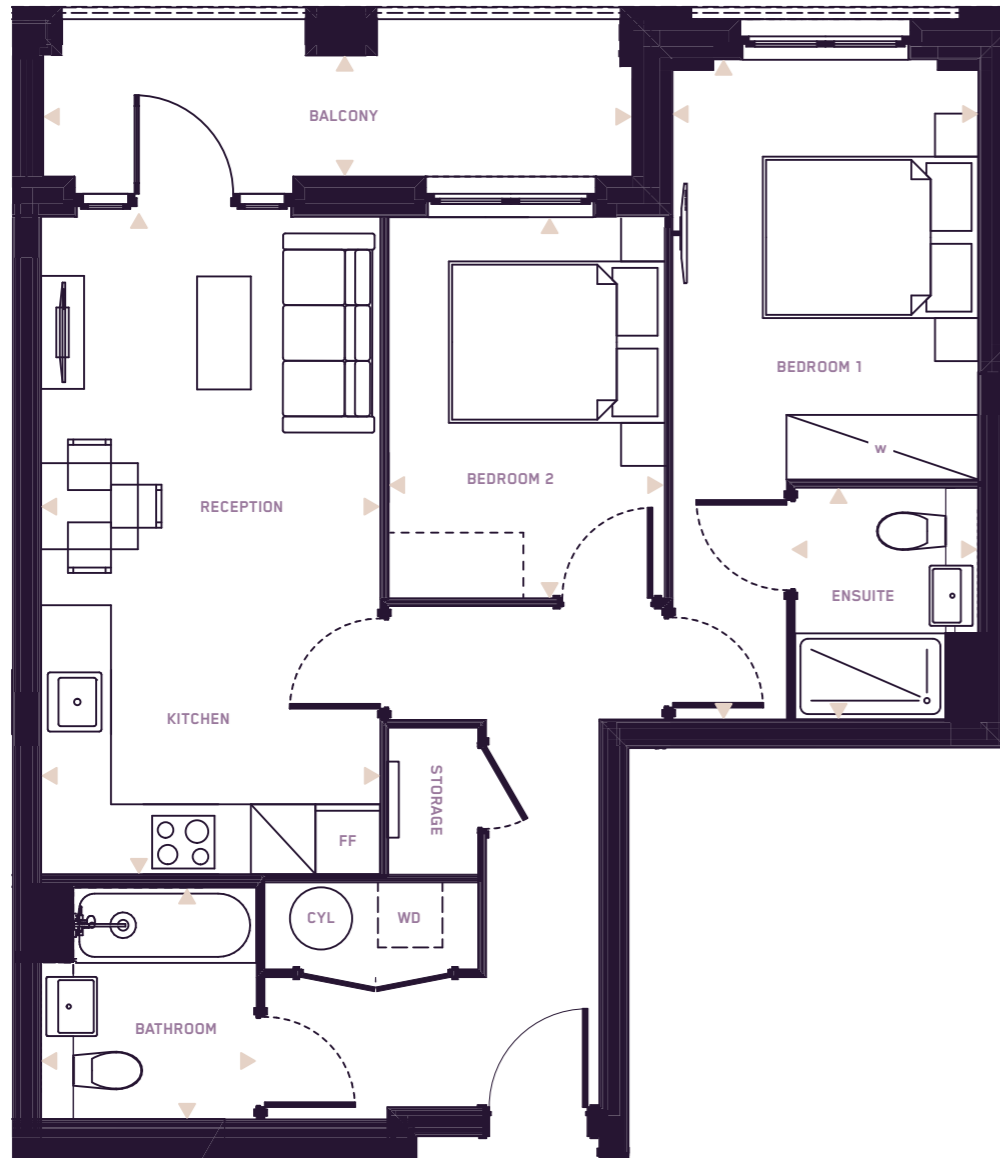
- W — FITTED WARDROBE
- - - SPACE FOR WARDROBE
- CYL — CYLINDER
- WD — WASHER DRYER
- FF — FRIDGE FREEZER



PLOT 55	5
PLOT 45	4
PLOT 35	3
PLOT 25	2
PLOT 15	1
	G

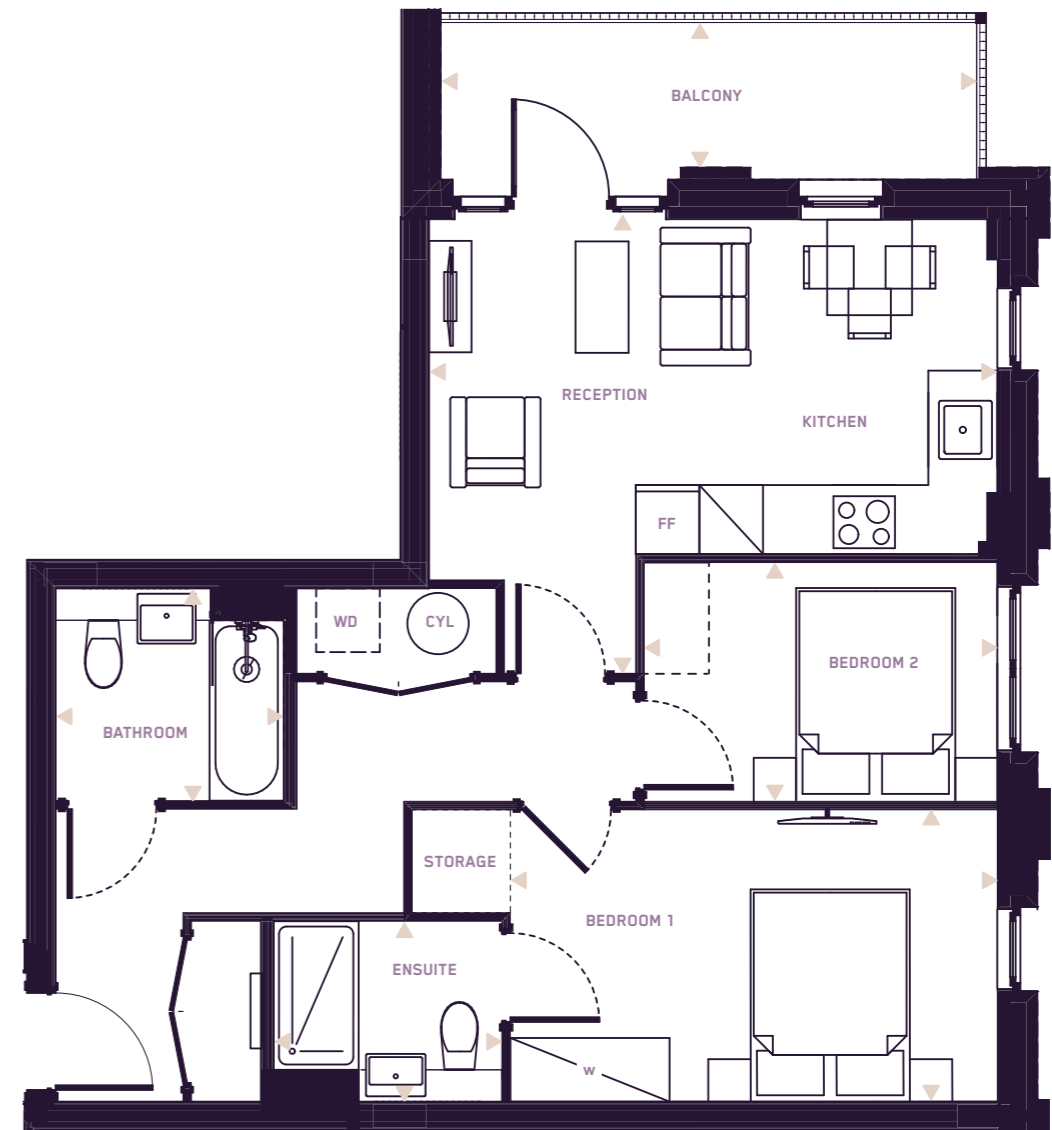
# BEAUMONT HOUSE 2 BEDROOM APARTMENT

PLOTS 1 6 16 26 36 46



# BEAUMONT HOUSE 2 BEDROOM APARTMENT

PLOTS 2 7 17 27 37 47



ROOM AREAS

## 2 Bedroom Apartment

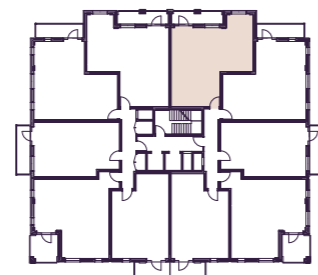
— All Floors

Reception	3.1 x 3.6m	• 10'1" x 11'9"
Kitchen	3.1 x 2.5m	• 10'4" x 8'2"
Bedroom 1	2.8 x 6.1m	• 9'4" x 20'1"
Ensuite	1.7 x 2.2m	• 5'7" x 7'1"
Bedroom 2	2.5 x 3.5m	• 8'5" x 11'7"
Bathroom	2.0 x 2.1m	• 6'7" x 7'1"
Balcony	5.5 x 1.1m	• 18'8" x 3'9"

Total area 64m<sup>2</sup> 689ft<sup>2</sup>

Key

- W FITTED WARDROBE
- - - SPACE FOR WARDROBE
- CYL CYLINDER
- WD WASHER DRYER
- FF FRIDGE FREEZER



PLOT 46	5
PLOT 36	4
PLOT 26	3
PLOT 16	2
PLOT 6	1
PLOT 1	G

ROOM AREAS

## 2 Bedroom Apartment

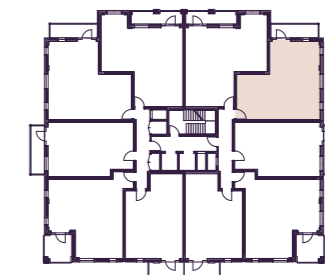
— All Floors

Kitchen / Reception	5.3 x 4.4m	• 17'7" x 14'4"
Bedroom 1	5.5 x 2.8m	• 17'11" x 9'0"
Ensuite	1.7 x 2.2m	• 5'7" x 7'1"
Bedroom 2	3.3 x 2.3m	• 10'11" x 7'5"
Bathroom	2.0 x 2.1m	• 6'7" x 7'1"
Balcony	5.1 x 1.5m	• 16'8" x 4'11"

Total area 61.5m<sup>2</sup> 662ft<sup>2</sup>

Key

- W FITTED WARDROBE
- - - SPACE FOR WARDROBE
- CYL CYLINDER
- WD WASHER DRYER
- FF FRIDGE FREEZER



PLOT 47	5
PLOT 37	4
PLOT 27	3
PLOT 17	2
PLOT 7	1
PLOT 2	G

# BEAUMONT HOUSE 1 BEDROOM APARTMENT

PLOTS 3 8 18 28 38 48

# BEAUMONT HOUSE 2 BEDROOM APARTMENT

PLOTS 4 9 19 29 39 49

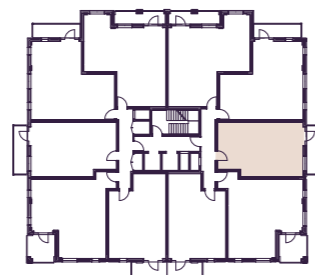


## ROOM AREAS 1 Bedroom Apartment

— All Floors

Reception	4.8 x 2.9m	• 15.10" x 9'6"
Kitchen	2.4 x 2.9m	• 8.0" x 9'6"
Bedroom 1	4.4 x 2.8m	• 14.6" x 9'3"
Bathroom	1.7 x 2.2m	• 5.7" x 7'0"
Balcony	5.2 x 1.5m	• 17.0" x 4'1"
<b>Total area</b>	<b>50.8m<sup>2</sup></b>	<b>547ft<sup>2</sup></b>

**Key**  
 W — FITTED WARDROBE  
 - - - SPACE FOR WARDROBE  
 CYL — CYLINDER  
 WD — WASHER DRYER  
 FF — FRIDGE FREEZER



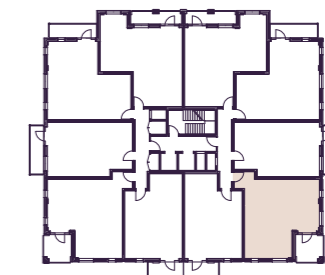
PLOT 48	5
PLOT 38	4
PLOT 28	3
PLOT 18	2
PLOT 8	1
PLOT 3	G

## ROOM AREAS 2 Bedroom Apartment

— All Floors

Reception	3.7 x 2.6m	• 12.2" x 8'7"
Kitchen	2.8 x 2.8m	• 9.3" x 9'5"
Bedroom 1	2.8 x 4.2m	• 9.4" x 13'8"
Ensuite	1.7 x 2.2m	• 5.7" x 7'0"
Bedroom 2	2.1 x 4.2m	• 6.11" x 13'8"
Bathroom	2.0 x 2.1m	• 6.7" x 7'0"
Balcony	2.6 x 2.6m	• 8.5" x 8'5"
<b>Total area</b>	<b>61.3m<sup>2</sup></b>	<b>659ft<sup>2</sup></b>

**Key**  
 W — FITTED WARDROBE  
 - - - SPACE FOR WARDROBE  
 CYL — CYLINDER  
 WD — WASHER DRYER  
 FF — FRIDGE FREEZER



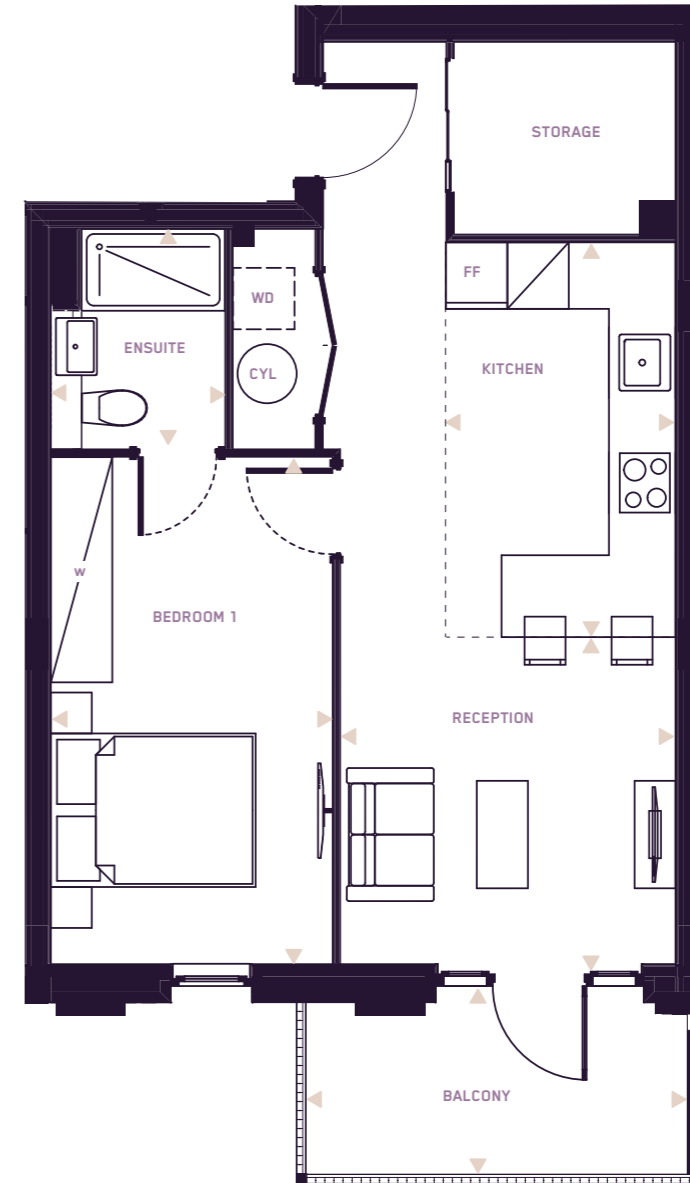
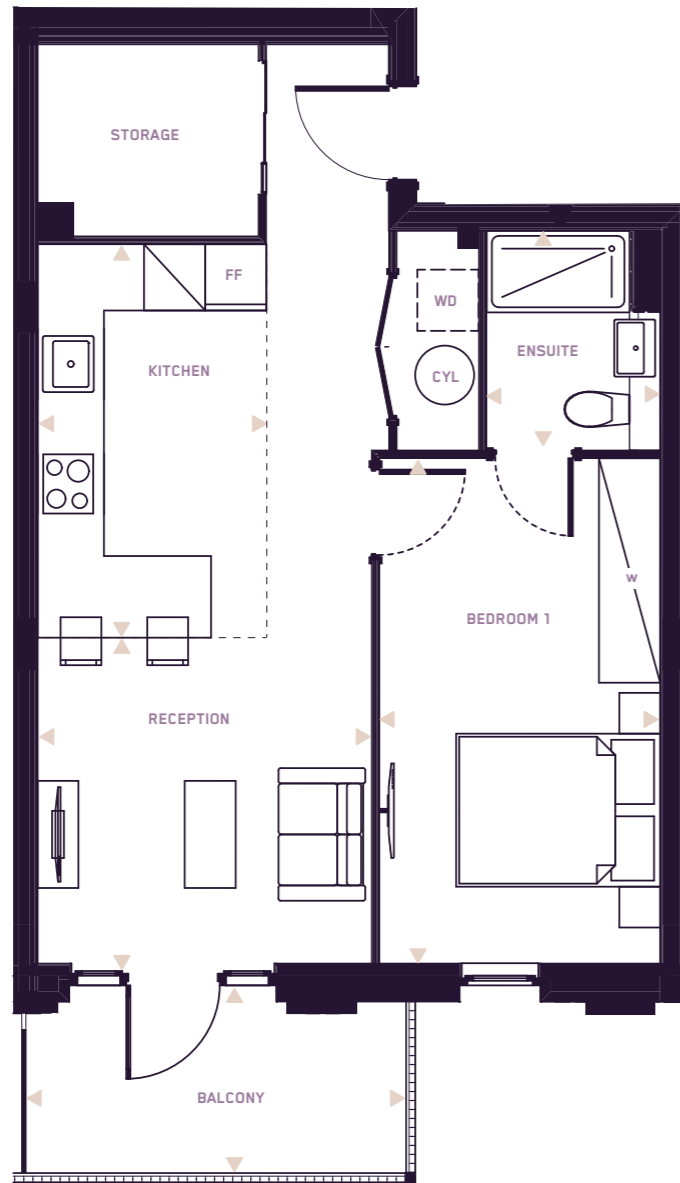
PLOT 49	5
PLOT 39	4
PLOT 29	3
PLOT 19	2
PLOT 9	1
PLOT 4	G

# BEAUMONT HOUSE 1 BEDROOM APARTMENT

PLOTS 10 20 30 40 50

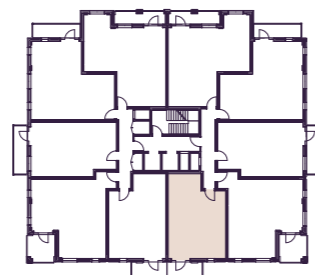
# BEAUMONT HOUSE 1 BEDROOM APARTMENT

PLOTS 11 21 31 41 51



**Key**

- W FITTED WARDROBE
- - - SPACE FOR WARDROBE
- CYL CYLINDER
- WD WASHER DRYER
- FF FRIDGE FREEZER



PLOT 50	5
PLOT 40	4
PLOT 30	3
PLOT 20	2
PLOT 10	1
	G

ROOM AREAS

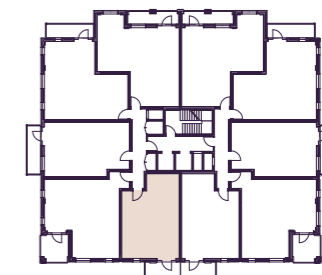
## 1 Bedroom Apartment

— 1st - 5th

Reception	4.0 x 3.3m	• 10.8" x 13'1"
Kitchen	2.2 x 3.1m	• 7.4" x 10'0"
Bedroom 1	4.9 x 2.8m	• 16.3" x 9'0"
Ensuite	1.7 x 2.2m	• 5.7" x 7'0"
Balcony	3.8 x 1.7m	• 12.4" x 5'7"
<b>Total area</b>	<b>50.1m<sup>2</sup></b>	<b>540ft<sup>2</sup></b>

**Key**

- W FITTED WARDROBE
- - - SPACE FOR WARDROBE
- CYL CYLINDER
- WD WASHER DRYER
- FF FRIDGE FREEZER



PLOT 51	5
PLOT 41	4
PLOT 31	3
PLOT 21	2
PLOT 11	1
	G

ROOM AREAS

## 1 Bedroom Apartment

— 1st - 5th

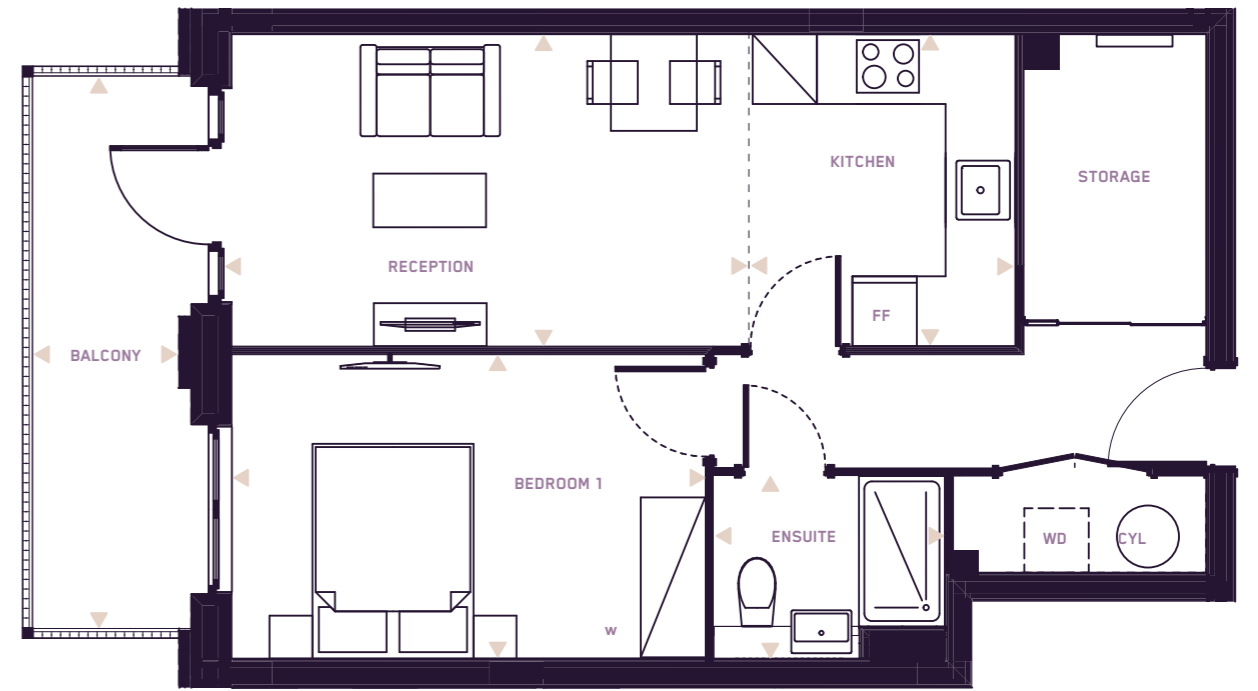
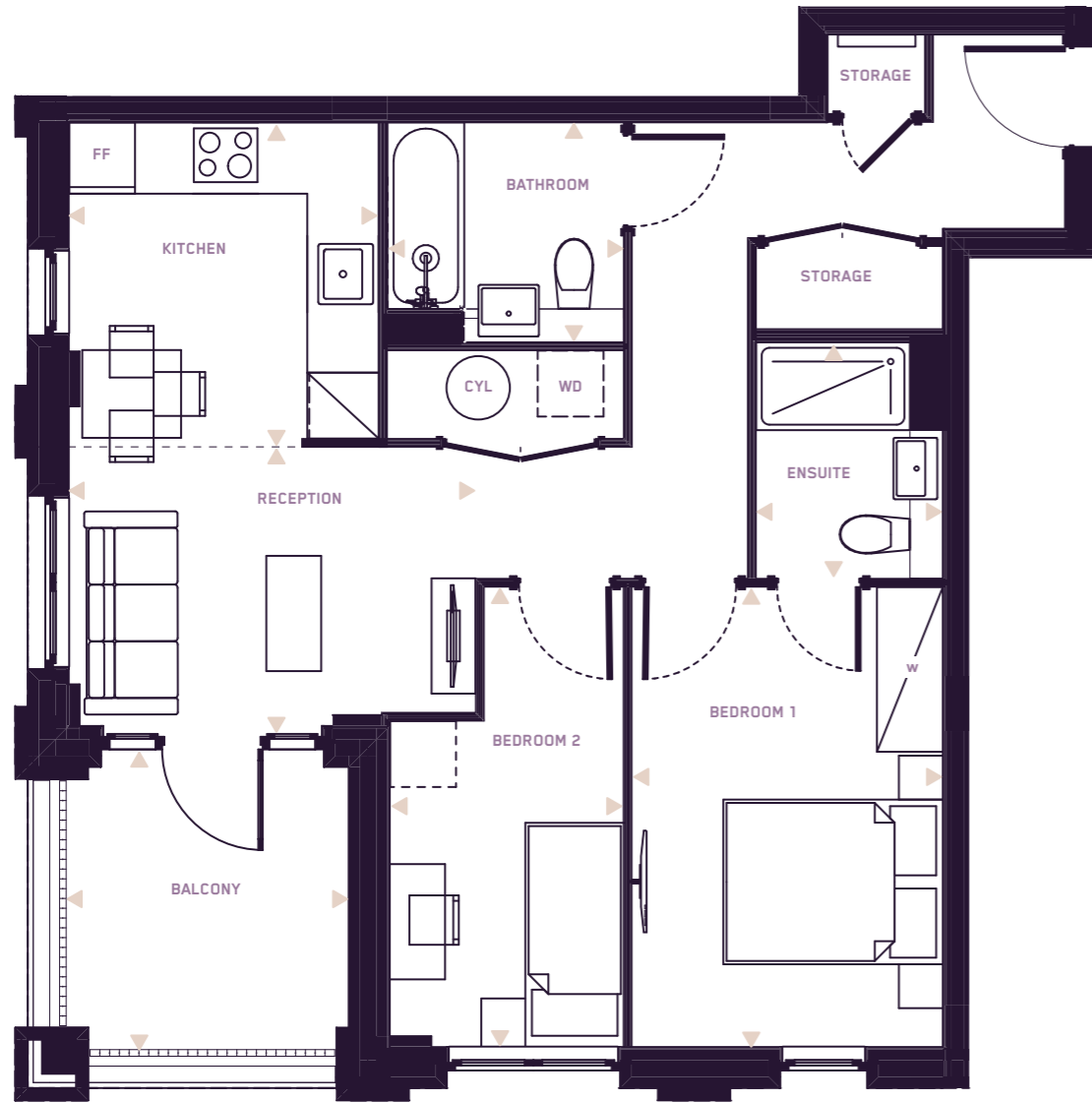
Reception	4.0 x 3.3m	• 10.8" x 13'1"
Kitchen	2.2 x 3.1m	• 7.4" x 10'0"
Bedroom 1	4.9 x 2.8m	• 16.3" x 9'0"
Ensuite	1.7 x 2.2m	• 5.7" x 7'0"
Balcony	3.8 x 1.7m	• 12.4" x 5'7"
<b>Total area</b>	<b>50.1m<sup>2</sup></b>	<b>540ft<sup>2</sup></b>

# BEAUMONT HOUSE 2 BEDROOM APARTMENT

PLOTS 12 22 32 42 52

# BEAUMONT HOUSE 1 BEDROOM APARTMENT

PLOTS 13 23 33 43 53



## ROOM AREAS 2 Bedroom Apartment

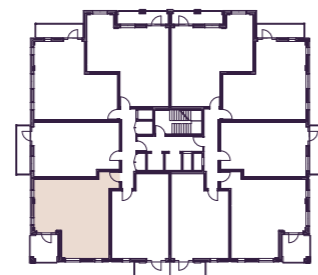
— 1st - 5th

Reception	3.7 x 2.6m • 12.2" x 8'7"
Kitchen	2.9 x 2.8m • 9.5" x 9'3"
Bedroom 1	2.8 x 4.2m • 9.4" x 13'9"
Ensuite	1.7 x 2.2m • 5.7" x 7'0"
Bedroom 2	2.1 x 4.2m • 6.12" x 13'9"
Bathroom	2.0 x 2.1m • 6.7" x 7'0"
Balcony	2.6 x 2.6m • 8.5" x 8'5"

**Total area** 61.3m<sup>2</sup> 660ft<sup>2</sup>

### Key

- W — FITTED WARDROBE
- - - SPACE FOR WARDROBE
- CYL — CYLINDER
- WD — WASHER DRYER
- FF — FRIDGE FREEZER



PLOT 52	5
PLOT 42	4
PLOT 32	3
PLOT 22	2
PLOT 12	1
	G

## ROOM AREAS 1 Bedroom Apartment

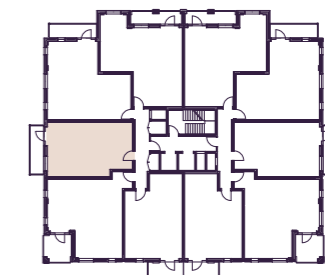
— 1st - 5th

Reception	4.9 x 2.9m • 15.11" x 9'6"
Kitchen	2.4 x 2.9m • 8.0" x 9'6"
Bedroom 1	4.4 x 2.8m • 14.6" x 9'3"
Ensuite	1.7 x 2.2m • 5.7" x 7'1"
Balcony	1.5 x 5.2m • 17.0" x 4'10"

**Total area** 50.8m<sup>2</sup> 547ft<sup>2</sup>

### Key

- W — FITTED WARDROBE
- - - SPACE FOR WARDROBE
- CYL — CYLINDER
- WD — WASHER DRYER
- FF — FRIDGE FREEZER



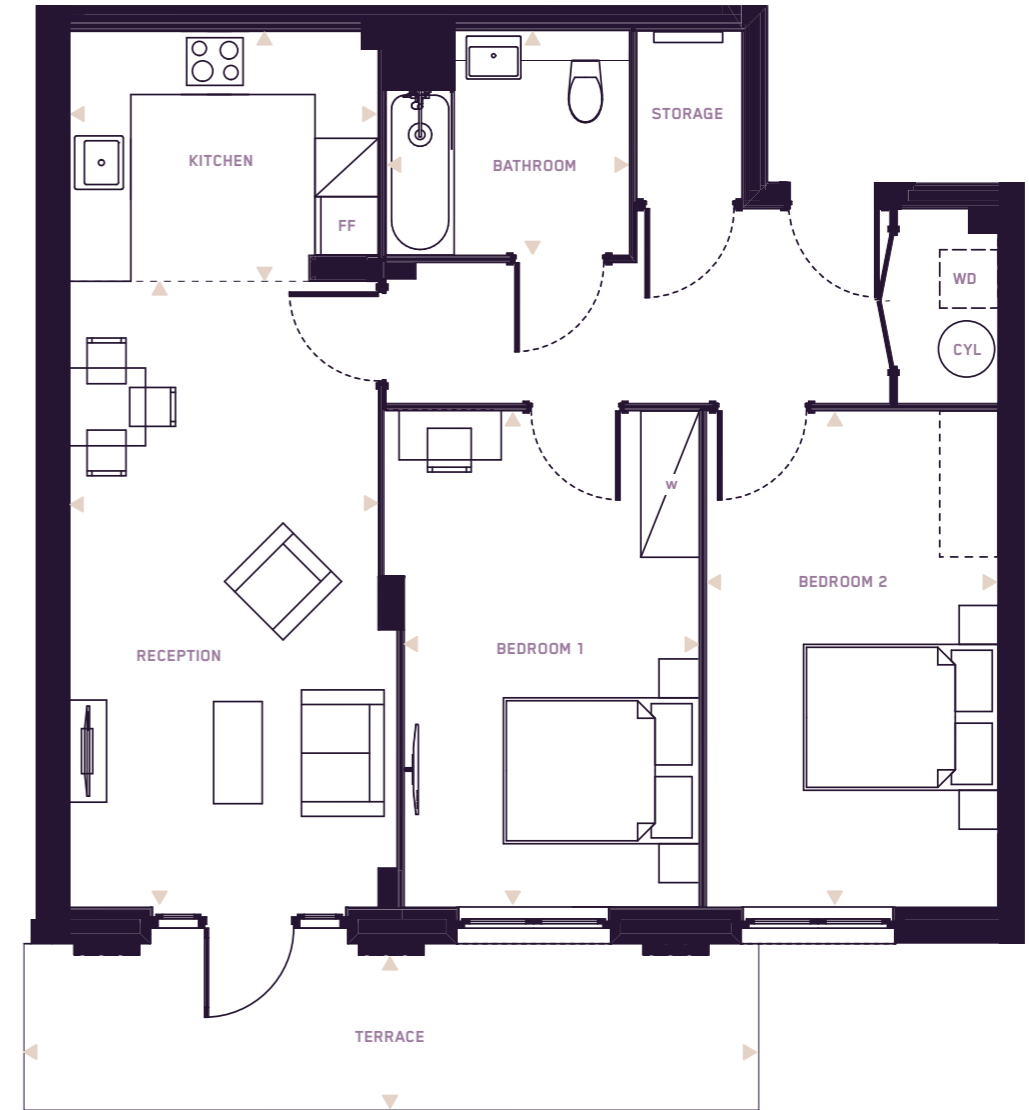
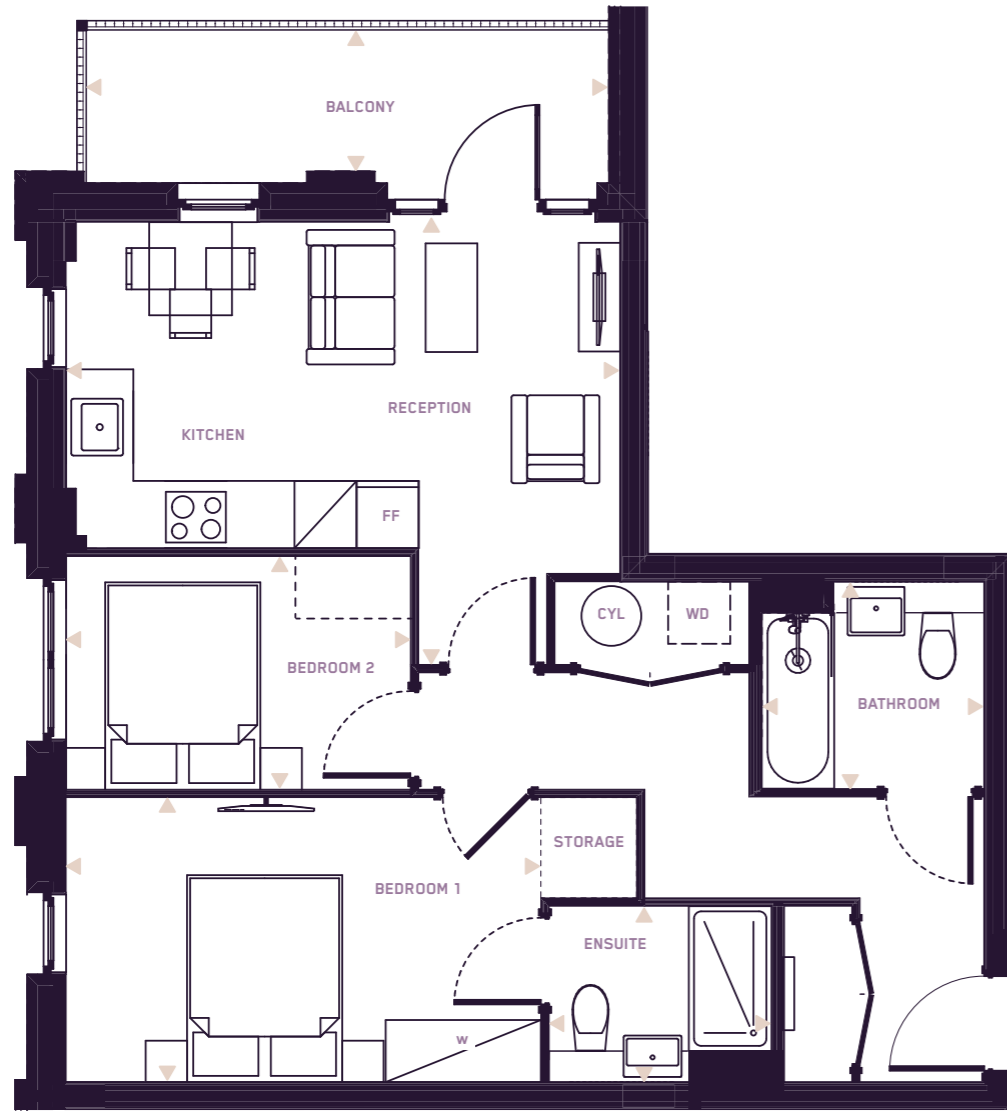
PLOT 53	5
PLOT 43	4
PLOT 33	3
PLOT 23	2
PLOT 13	1
	G

# BEAUMONT HOUSE 2 BEDROOM APARTMENT

PLOTS 14 24 34 44 54

# BEAUMONT HOUSE 2 BEDROOM APARTMENT

PLOT 5



ROOM AREAS

## 2 Bedroom Apartment

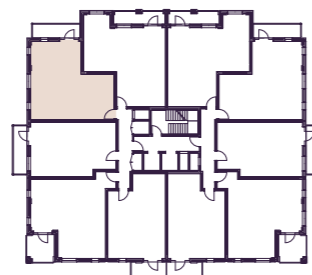
— 1st - 5th

Reception	5.4 x 4.3m	• 17.7" x 14'0"
Bedroom 1	5.5 x 2.8m	• 18.1" x 9'0"
Ensuite	1.7 x 2.2m	• 5.7" x 7'0"
Bedroom 2	3.3 x 2.3m	• 10.8" x 7'5"
Bathroom	2.0 x 2.2m	• 6.7" x 7'0"
Balcony	5.1 x 1.5m	• 16.8" x 4'11"

Total area 61.5m<sup>2</sup> 662ft<sup>2</sup>

### Key

- W FITTED WARDROBE
- - - SPACE FOR WARDROBE
- CYL CYLINDER
- WD WASHER DRYER
- FF FRIDGE FREEZER



PLOT 54	5
PLOT 44	4
PLOT 34	3
PLOT 24	2
PLOT 14	1
	G

ROOM AREAS

## 2 Bedroom Apartment

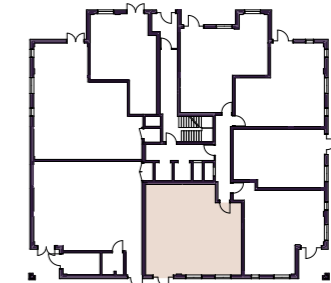
— Ground Floor

Reception	6.4 x 3.4m	• 21.1" x 11'1"
Kitchen	3.2 x 2.6m	• 10.6" x 8'5"
Bedroom 1	3.0 x 5.1m	• 9.10" x 16'9"
Bedroom 2	3.2 x 5.1m	• 10.7" x 16'9"
Bathroom	2.5 x 2.3m	• 8.2" x 7'7"
Terrace	1.7 x 7.6m	• 5.7" x 25'0"

Total area 81.2m<sup>2</sup> 874ft<sup>2</sup>

### Key

- W FITTED WARDROBE
- - - SPACE FOR WARDROBE
- CYL CYLINDER
- WD WASHER DRYER
- FF FRIDGE FREEZER



	5
	4
	3
	2
	1
PLOT 5	G

# FLEXIBLE SPACES FOR MODERN LONDON LIVING



## SITE PLAN



- 1 Beaumont House
- 2 Rosemont Mansion
- 3 The Claremont
- 4 Pocket Park
- 5 Sensory Gardens
- 6 Millennium Green